

# Anti-MID1IP1 antibody



Catalog Number: 141248

## Product name

Anti-MID1IP1 antibody

## Immunogen

[Human MID1IP1 \(His Tag\) recombinant protein](#)

## Specificity

Human MID1IP1

## Antibody description

Rabbit Monoclonal to Human MID1IP1

## Preparation

This antibody was obtained from a rabbit immunized with purified, recombinant Human MID1IP1 .

## Formulation

0.2 µm filtered solution in PBS

## Storage

This antibody can be stored at 2°C-8°C for one month without detectable loss of activity. Antibody products are stable for twelve months from date of receipt when stored at -20°C to -80°C.

Preservative-Free.

Sodium azide is recommended to avoid

contamination (final concentration 0.05%-0.1%). It is toxic to cells and should be disposed of properly. Avoid repeated freeze-thaw cycles.

## Clonality

Monoclonal

## Ig Type

Rabbit IgG

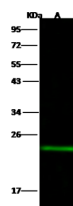
## Applications

WB

## Dilutions

WB: 5-20 µg/ml

## Validations



Items	lanes	A
Sample (whole cell lysate)		HepG2
Sample Volume (µg/lane)		30
Gel		13% SDS-PAGE reducing gel
Recommended Concentration		5-20 µg/ml
Secondary Antibody		Dylight 800-labeled Antibody to Rabbit IgG [H+], at 1:5000 dilution.
		Developed using Odyssey imaging system.
Explanation		Predicted band size : 20 kDa Observed band size : 23 kDa

Human MID1IP1 Western blot (WB) 14852