

Product name

ZXDC antibody

Specificity

Human, Mouse; other species not tested.

Antibody description

ZXDC Rabbit Polyclonal antibody. Positive WB detected in human kidney tissue, A431 cells, HEK-293 cells, mouse kidney tissue. Positive IF detected in Hela cells. Observed molecular weight by Western-blot: 70-75 kDa

Preparation

This antibody was obtained by immunization of ZXDC recombinant protein (Accession Number: BC002940). Purification method: Antigen affinity purified.

Formulation

PBS with 0.02% sodium azide and 50% glycerol pH 7.3.

Storage

Store at -20°C. DO NOT ALIQUOT

Clonality

Polyclonal

Ig Type

Rabbit IgG

Applications

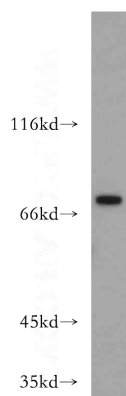
ELISA, WB, IF

Dilutions

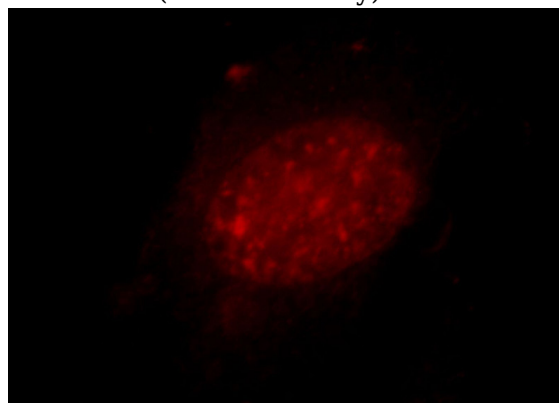
Recommended Dilution:

WB: 1:200-1:2000

IF: 1:10-1:100

Validations

human kidney tissue were subjected to SDS PAGE followed by western blot with Catalog No:117273(ZXDC antibody) at dilution of 1:300



Immunofluorescent analysis of Hela cells, using ZXDC antibody Catalog No:117273 at 1:25 dilution and Rhodamine-labeled goat anti-rabbit IgG (red).