

ZP3 antibody

Catalog Number: 117262

Product name

ZP3 antibody

IP: 1:200-1:2000

IHC: 1:20-1:200

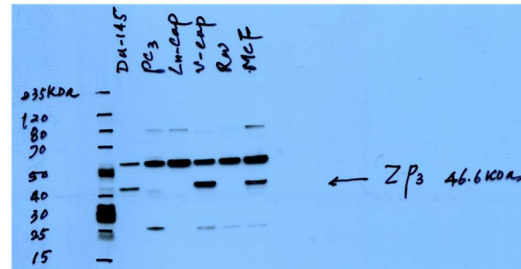
Specificity

Human; other species not tested.

Validations

Antibody description

ZP3 Rabbit Polyclonal antibody. Positive IHC detected in human breast cancer tissue, human prostate cancer tissue. Positive IP detected in HeLa cells. Positive WB detected in multi-cells. Observed molecular weight by Western-blot: 46 kDa, 60 kDa



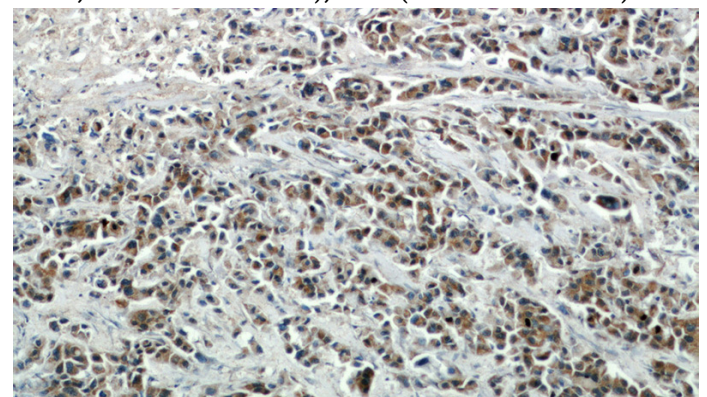
Preparation

This antibody was obtained by immunization of ZP3 recombinant protein (Accession Number: NM_007155). Purification method: Antigen affinity purified.

WB result of Catalog No:117262(ZP3) from Dr. Soory. (Target band 41-47kd,56kd(Glycosylated form, PMID:19700799),83kd(PMID: 1577197)).

Formulation

PBS with 0.1% sodium azide and 50% glycerol pH 7.3.



Storage

Store at -20°C. DO NOT ALIQUOT

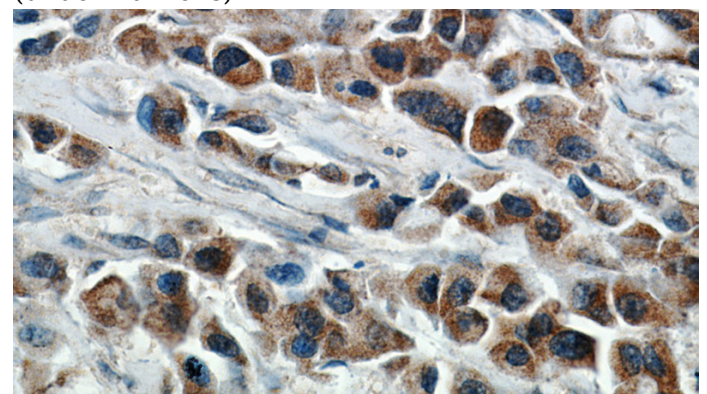
Clonality

Polyclonal

Immunohistochemical of paraffin-embedded human breast cancer using Catalog No:117262(ZP3 antibody) at dilution of 1:50 (under 10x lens)

Ig Type

Rabbit IgG



Applications

ELISA, IHC, WB, IP

Dilutions

Recommended Dilution:

WB: 1:200-1:2000

Immunohistochemical of paraffin-embedded

ZP3 antibody

Catalog Number: 117262

human breast cancer using Catalog No:117262(ZP3 antibody) at dilution of 1:50

IP Result of anti-ZP3 (IP:Catalog No:117262, 4ug; Detection:Catalog No:117262 1:500) with HeLa cells lysate 1600ug.

