

ZNF266 antibody

Catalog Number: 117152

Product name

ZNF266 antibody

Specificity

Human; other species not tested.

Antibody description

ZNF266 Rabbit Polyclonal antibody. Positive WB detected in HeLa cells. Positive IHC detected in human prostate cancer tissue. Observed molecular weight by Western-blot: 50~55+70~75 kDa

Preparation

This antibody was obtained by immunization of ZNF266 recombinant protein (Accession Number: BC017407). Purification method: Antigen affinity purified.

Formulation

PBS with 0.1% sodium azide and 50% glycerol pH 7.3.

Storage

Store at -20°C. DO NOT ALIQUOT

Clonality

Polyclonal

Ig Type

Rabbit IgG

Applications

ELISA, WB, IHC

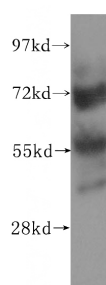
Dilutions

Recommended Dilution:

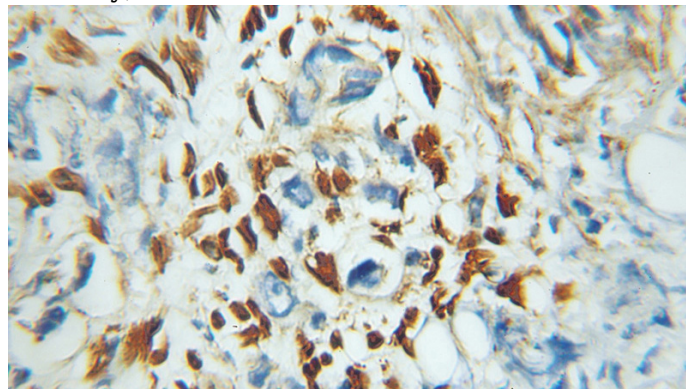
WB: 1:500-1:5000

IHC: 1:20-1:200

Validations



HeLa cells were subjected to SDS PAGE followed by western blot with Catalog No:117152(ZNF266 antibody) at dilution of 1:500



Immunohistochemical of paraffin-embedded human prostate cancer using Catalog No:117152(ZNF266 antibody) at dilution of 1:100 (under 10x lens)