

# ZIP8 antibody

Catalog Number: 117062

## Product name

ZIP8 antibody

## Specificity

Human, Mouse; other species not tested.

## Antibody description

ZIP8 Rabbit Polyclonal antibody. Positive IHC detected in human placenta tissue, human kidney tissue. Positive IF detected in HepG2 cells. Positive IP detected in mouse liver tissue. Positive WB detected in mouse lung tissue, mouse heart tissue, mouse liver tissue, mouse pancreas tissue, mouse thymus tissue, U-937 cells. Observed molecular weight by Western-blot: 42-46; 75-90 kDa

## Preparation

This antibody was obtained by immunization of ZIP8 recombinant protein (Accession Number: NM\_022154). Purification method: Antigen affinity purified.

## Formulation

PBS with 0.02% sodium azide and 50% glycerol pH 7.3.

## Storage

Store at -20°C. DO NOT ALIQUOT

## Clonality

Polyclonal

## Ig Type

Rabbit IgG

## Applications

ELISA, WB, IHC, IF, IP

## Dilutions

Recommended Dilution:

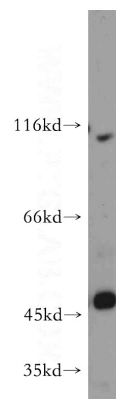
WB: 1:500-1:5000

IP: 1:200-1:2000

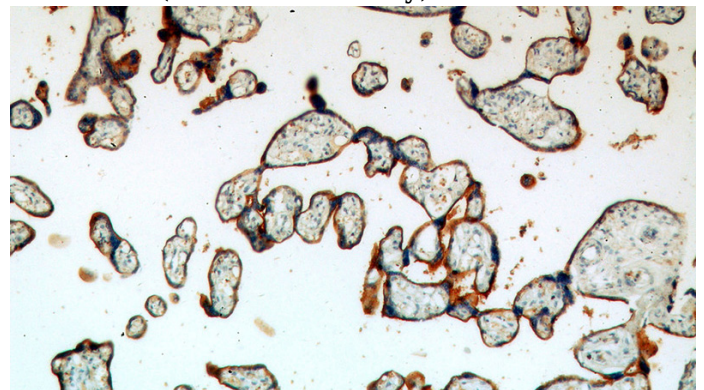
IHC: 1:20-1:200

IF: 1:10-1:100

## Validations



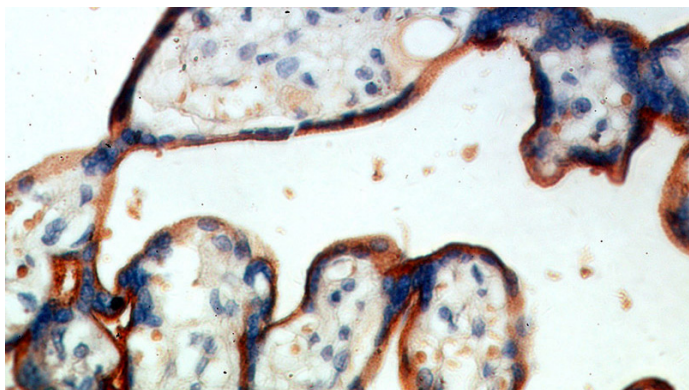
mouse lung tissue were subjected to SDS PAGE followed by western blot with Catalog No:117062(SLC39A8 antibody) at dilution of 1:800



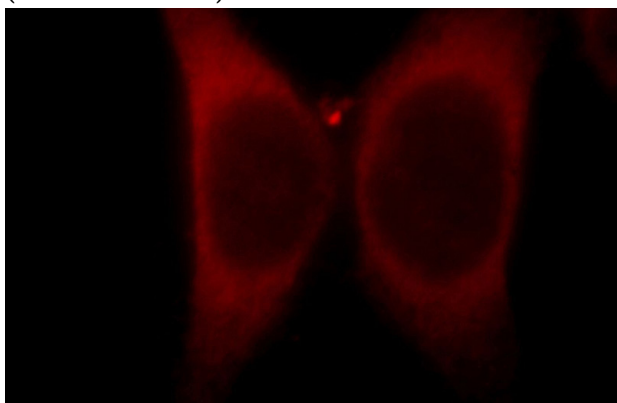
Immunohistochemical of paraffin-embedded human placenta using Catalog No:117062(SLC39A8 antibody) at dilution of 1:100 (under 10x lens)

# ZIP8 antibody

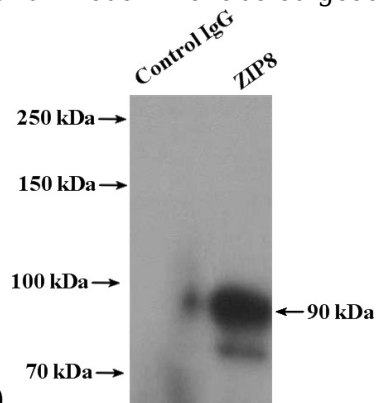
Catalog Number: 117062



Immunohistochemical of paraffin-embedded human placenta using Catalog No:117062(SLC39A8 antibody) at dilution of 1:100 (under 40x lens)



Immunofluorescent analysis of HepG2 cells, using SLC39A8 antibody Catalog No:117062 at 1:25 dilution and Rhodamine-labeled goat anti-rabbit



IgG (red).

IP Result of anti-SLC39A8 (IP:Catalog No:117062, 4ug; Detection:Catalog No:117062 1:500) with mouse liver tissue lysate 6000ug.