

# Zinc-alpha-2-glycoprotein antibody



Catalog Number: 117058

## Product name

Zinc-alpha-2-glycoprotein antibody

IHC: 1:20-1:200

IF: 1:20-1:200

## Specificity

Human; other species not tested.

## Antibody description

Zinc-alpha-2-glycoprotein Rabbit Polyclonal antibody. Positive WB detected in PC-3 cells, MCF7 cells. Positive IHC detected in human breast cancer tissue. Positive IF detected in PC-3 cells. Observed molecular weight by Western-blot: 41 kDa or 33 kDa

## Preparation

This antibody was obtained by immunization of Zinc-alpha-2-glycoprotein recombinant protein (Accession Number: NM\_001185). Purification method: Antigen affinity purified.

## Formulation

PBS with 0.02% sodium azide and 50% glycerol pH 7.3.

## Storage

Store at -20°C. DO NOT ALIQUOT

## Clonality

Polyclonal

## Ig Type

Rabbit IgG

## Applications

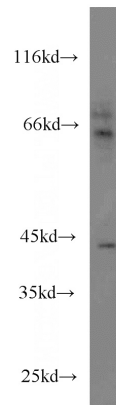
ELISA, WB, IHC, IF

## Dilutions

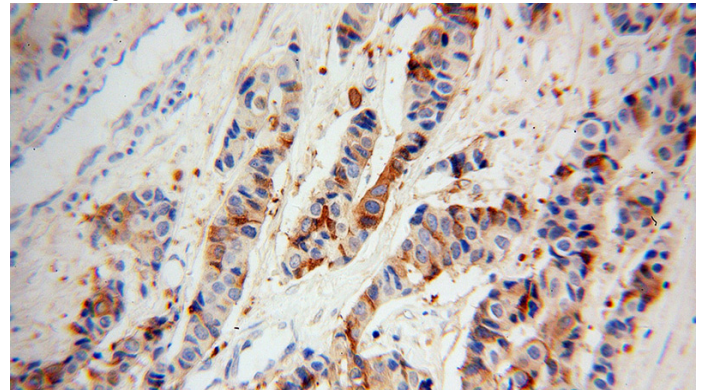
Recommended Dilution:

WB: 1:500-1:5000

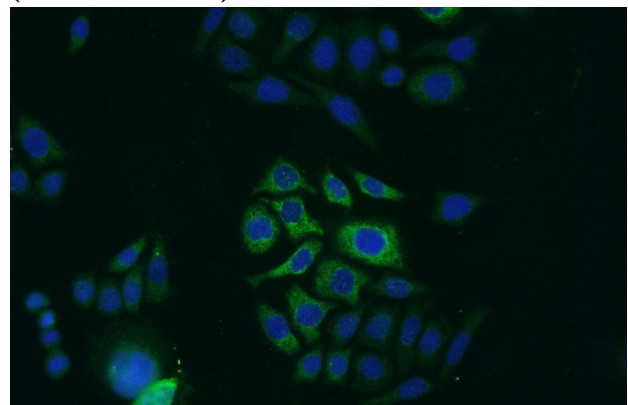
## Validations



PC-3 cells were subjected to SDS PAGE followed by western blot with Catalog No:117058(AZGP1 antibody) at dilution of 1:500



Immunohistochemical of paraffin-embedded human breast cancer using Catalog No:117058(AZGP1 antibody) at dilution of 1:100 (under 40x lens)



Immunofluorescent analysis of PC-3 cells using

# Zinc-alpha-2-glycoprotein antibody



Catalog Number: 117058

---

Catalog No:117058(AZGP1 Antibody) at dilution of 1:50 and Alexa Fluor 488-conjugated AffiniPure Goat Anti-Rabbit IgG(H+L)