

# ZFP36L2 antibody



Catalog Number: 117042

## Product name

ZFP36L2 antibody

## Specificity

Human, Mouse, Rat; other species not tested.

## Antibody description

ZFP36L2 Rabbit Polyclonal antibody. Positive WB detected in HepG2 cells, HL-60 cells. Observed molecular weight by Western-blot: 51kd; 60kd

## Preparation

This antibody was obtained by immunization of ZFP36L2 recombinant protein (Accession Number: NM\_006887). Purification method: Antigen affinity purified.

## Formulation

PBS with 0.02% sodium azide and 50% glycerol pH 7.3.

## Storage

Store at -20°C. DO NOT ALIQUOT

## Clonality

Polyclonal

## Ig Type

Rabbit IgG

## Applications

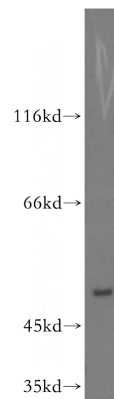
ELISA, WB

## Dilutions

Recommended Dilution:

WB: 1:200-1:2000

## Validations



HepG2 cells were subjected to SDS PAGE followed by western blot with Catalog No:117042(ZFP36L2 antibody) at dilution of 1:500