

# ZEB1 antibody



Catalog Number: 117037

## Product name

ZEB1 antibody

## Specificity

Human, Mouse, Rat; other species not tested.

## Antibody description

ZEB1 Rabbit Polyclonal antibody. Positive IP detected in MCF-7 cells. Positive WB detected in MCF7 cells, HeLa cells, PC-3 cells. Observed molecular weight by Western-blot: 190-210 kDa

## Preparation

This antibody was obtained by immunization of ZEB1 recombinant protein (Accession Number: NM\_001174096). Purification method: Antigen affinity purified.

## Formulation

PBS with 0.02% sodium azide and 50% glycerol pH 7.3.

## Storage

Store at -20°C. DO NOT ALIQUOT

## Clonality

Polyclonal

## Ig Type

Rabbit IgG

## Applications

ELISA, WB, IP

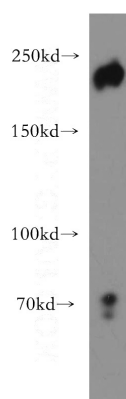
## Dilutions

Recommended Dilution:

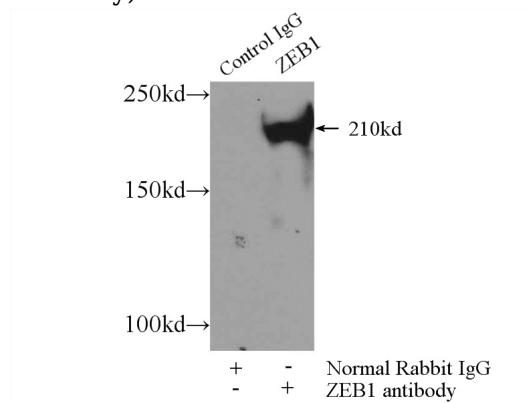
WB: 1:500-1:5000

IP: 1:200-1:2000

## Validations



MCF7 cells were subjected to SDS PAGE followed by western blot with Catalog No:117037(ZEB1 antibody) at dilution of 1:500



IP Result of anti-ZEB1 (IP:Catalog No:117037, 4ug; Detection:Catalog No:117037 1:500) with MCF-7 cells lysate 4000ug.