

XPNPEP3 antibody

Catalog Number: 116993

Product name

XPNPEP3 antibody

Specificity

Human, Mouse, Rat; other species not tested.

Antibody description

XPNPEP3 Rabbit Polyclonal antibody. Positive WB detected in human liver tissue, human spleen tissue, human testis tissue, mouse brain tissue, PC-3 cells. Positive IHC detected in human lung cancer tissue, human oesophagus tissue. Observed molecular weight by Western-blot: 57kd

Preparation

This antibody was obtained by immunization of XPNPEP3 recombinant protein (Accession Number: NM_022098). Purification method: Antigen affinity purified.

Formulation

PBS with 0.02% sodium azide and 50% glycerol pH 7.3.

Storage

Store at -20°C. DO NOT ALIQUOT

Clonality

Polyclonal

Ig Type

Rabbit IgG

Applications

ELISA, WB, IHC

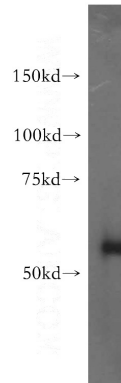
Dilutions

Recommended Dilution:

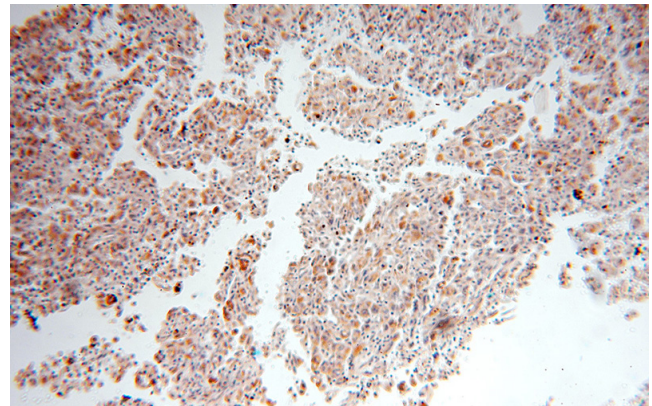
WB: 1:500-1:5000

IHC: 1:20-1:200

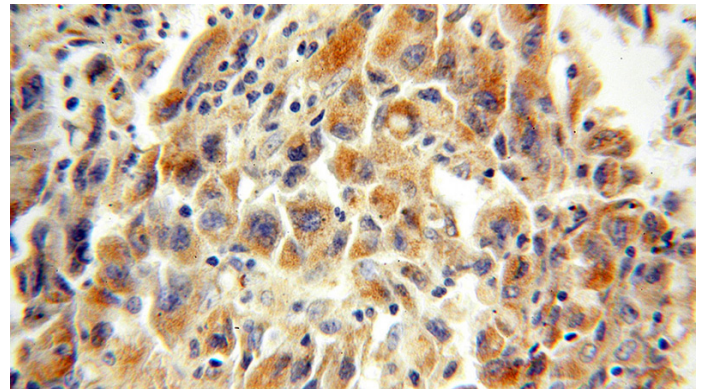
Validations



human liver tissue were subjected to SDS PAGE followed by western blot with Catalog No:116993(XPNPEP3 antibody) at dilution of 1:500



Immunohistochemical of paraffin-embedded human lung cancer using Catalog No:116993(XPNPEP3 antibody) at dilution of 1:100 (under 10x lens)



Immunohistochemical of paraffin-embedded human lung cancer using Catalog

XPNPEP3 antibody



Catalog Number: 116993

No:116993(XPNPEP3 antibody) at dilution of

1:100 (under 40x lens)