

WWP2 antibody



Catalog Number: 116979

Product name

WWP2 antibody

Specificity

Human, Mouse; other species not tested.

Antibody description

WWP2 Rabbit Polyclonal antibody. Positive WB detected in mouse liver tissue, A549 cells. Positive IHC detected in human pancreas cancer tissue. Observed molecular weight by Western-blot: 110-115 kDa

Preparation

This antibody was obtained by immunization of WWP2 recombinant protein (Accession Number: XM_017022880). Purification method: Antigen affinity purified.

Formulation

PBS with 0.02% sodium azide and 50% glycerol pH 7.3.

Storage

Store at -20°C. DO NOT ALIQUOT

Clonality

Polyclonal

Ig Type

Rabbit IgG

Applications

ELISA, WB, IHC

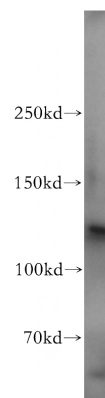
Dilutions

Recommended Dilution:

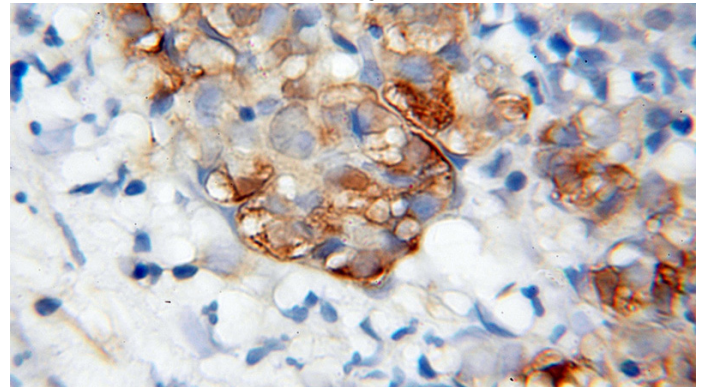
WB: 1:200-1:2000

IHC: 1:20-1:200

Validations



mouse liver tissue were subjected to SDS PAGE followed by western blot with Catalog No:116979(WWP2 antibody) at dilution of 1:500



Immunohistochemical of paraffin-embedded human pancreas cancer using Catalog No:116979(WWP2 antibody) at dilution of 1:100 (under 40x lens)