

WWP1 antibody



Catalog Number: 116978

Product name

WWP1 antibody

Specificity

Human, Mouse, Rat; other species not tested.

Antibody description

WWP1 Rabbit Polyclonal antibody. Positive IF detected in PC-3 cells. Positive IP detected in PC-3 cells. Positive WB detected in PC-3 cells. Observed molecular weight by Western-blot: 95 kDa

Preparation

This antibody was obtained by immunization of WWP1 recombinant protein (Accession Number: XM_005250760). Purification method: Antigen affinity purified.

Formulation

PBS with 0.02% sodium azide and 50% glycerol pH 7.3.

Storage

Store at -20°C. DO NOT ALIQUOT

Clonality

Polyclonal

Ig Type

Rabbit IgG

Applications

ELISA, WB, IP, IF

Dilutions

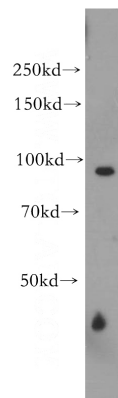
Recommended Dilution:


WB: 1:200-1:2000

IP: 1:200-1:1000

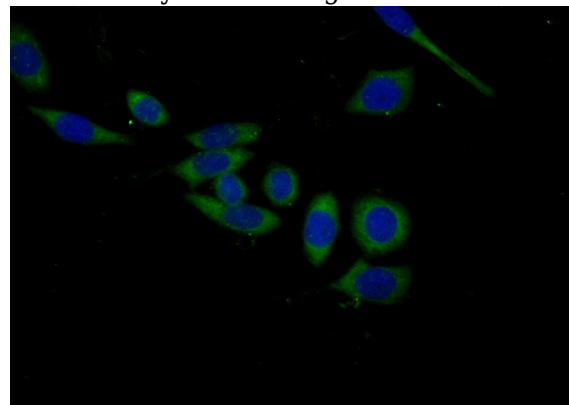
IF: 1:20-1:200

Validations



PC-3 cells were subjected to SDS PAGE followed by western blot with Catalog No:116978(WWP1 antibody) at dilution of 1:300 

IP Result of anti-WWP1 (IP:Catalog No:116978, 4ug; Detection:Catalog No:116978 1:300) with PC-3 cells lysate 1040ug.



Immunofluorescent analysis of (-20oc Ethanol) fixed PC-3 cells using Catalog No:116978(WWP1 Antibody) at dilution of 1:50 and Alexa Fluor 488-conjugated AffiniPure Goat Anti-Rabbit IgG(H+L)