

# WT1 antibody

Catalog Number: 116973

## Product name

WT1 antibody

## Specificity

Human, Mouse, Rat; other species not tested.

## Antibody description

WT1 Rabbit Polyclonal antibody. Positive WB detected in human kidney tissue, A431 cells, human liver tissue, K-562 cells, MCF7 cells, mouse kidney tissue, rat kidney tissue. Positive IP detected in mouse kidney tissue. Observed molecular weight by Western-blot: 52-55kd

## Preparation

This antibody was obtained by immunization of WT1 recombinant protein (Accession Number: NM\_001198551). Purification method: Antigen affinity purified.

## Formulation

PBS with 0.02% sodium azide and 50% glycerol pH 7.3.

## Storage

Store at -20°C. DO NOT ALIQUOT

## Clonality

Polyclonal

## Ig Type

Rabbit IgG

## Applications

ELISA, WB, IP

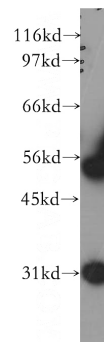
## Dilutions

Recommended Dilution:

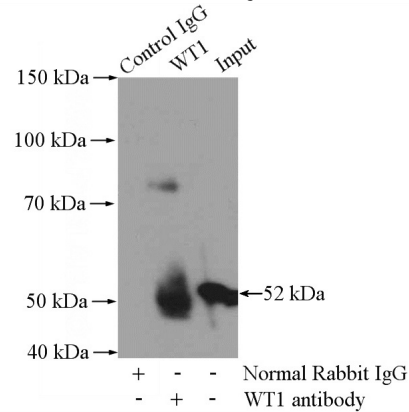
WB: 1:500-1:5000

IP: 1:500-1:5000

## Validations



human kidney tissue were subjected to SDS PAGE followed by western blot with Catalog No:116973(WT1 antibody) at dilution of 1:300



IP Result of anti-WT1 (IP:Catalog No:116973, 4ug; Detection:Catalog No:116973 1:1000) with mouse kidney tissue lysate 4000ug.