

## Product name

WSB1 antibody

IHC: 1:20-1:200

IF: 1:10-1:100

## Specificity

Human; other species not tested.

## Antibody description

WSB1 Rabbit Polyclonal antibody. Positive WB detected in SGC-7901 cells, A549 cells, COLO 320 cells. Positive IF detected in HepG2 cells. Positive IHC detected in human prostate cancer tissue, human breast cancer tissue. Observed molecular weight by Western-blot: 56 kDa

## Preparation

This antibody was obtained by immunization of WSB1 recombinant protein (Accession Number: NM\_015626). Purification method: Antigen affinity purified.

## Formulation

PBS with 0.1% sodium azide and 50% glycerol pH 7.3.

## Storage

Store at -20°C. DO NOT ALIQUOT

## Clonality

Polyclonal

## Ig Type

Rabbit IgG

## Applications

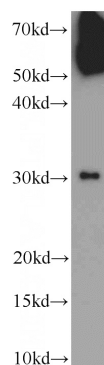
ELISA, WB, IF, IHC

## Dilutions

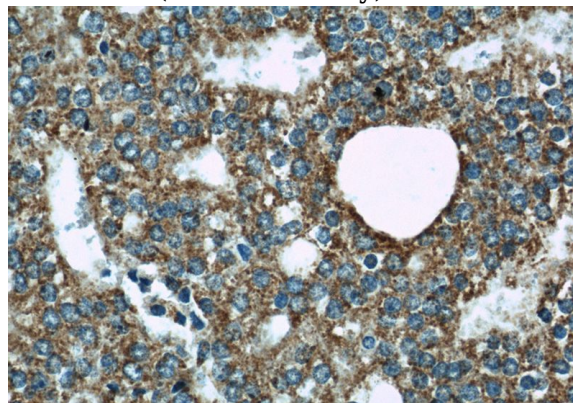
Recommended Dilution:

WB: 1:500-1:5000

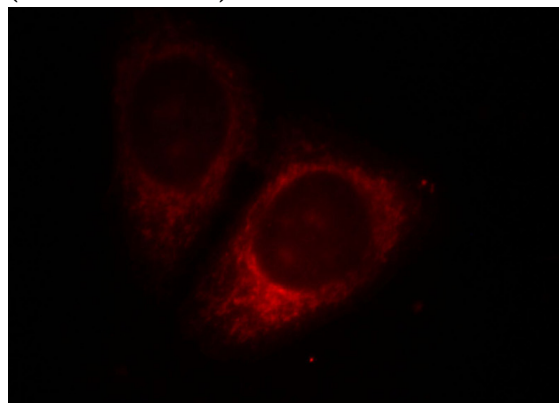
## Validations



SGC-7901 cells were subjected to SDS PAGE followed by western blot with Catalog No:116971(WSB1 antibody) at dilution of 1:1000



Immunohistochemical of paraffin-embedded human prostate cancer using Catalog No:116971(WSB1 antibody) at dilution of 1:50 (under 40x lens)



Immunofluorescent analysis of HepG2 cells, using

# WSB1 antibody



Catalog Number: 116971

---

WSB1 antibody Catalog No:116971 at 1:25

dilution and Rhodamine-labeled goat anti-rabbit  
IgG (red).