

ZNF24 antibody



Catalog Number: 116964

Product name

ZNF24 antibody

IHC: 1:20-1:200

IF: 1:20-1:200

Specificity

Human, Mouse, Rat; other species not tested.

Antibody description

ZNF24 Rabbit Polyclonal antibody. Positive IF detected in HeLa cells. Positive IHC detected in human ovary tumor tissue, human breast cancer tissue, human testis tissue. Positive WB detected in HeLa cells, mouse liver tissue. Observed molecular weight by Western-blot: 42 kDa

Preparation

This antibody was obtained by immunization of ZNF24 recombinant protein (Accession Number: XM_005258341). Purification method: Antigen affinity purified.

Formulation

PBS with 0.1% sodium azide and 50% glycerol pH 7.3.

Storage

Store at -20°C. DO NOT ALIQUOT

Clonality

Polyclonal

Ig Type

Rabbit IgG

Applications

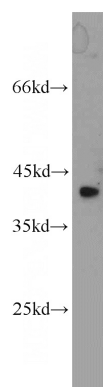
ELISA, WB, IHC, IF

Dilutions

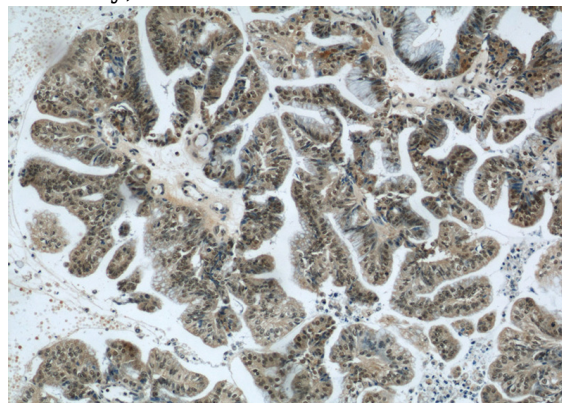
Recommended Dilution:

WB: 1:200-1:2000

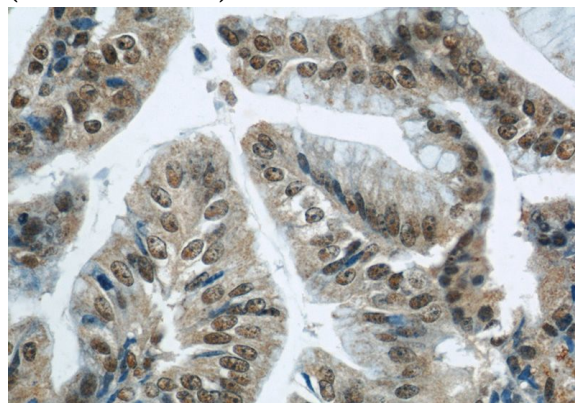
Validations



HeLa cells were subjected to SDS PAGE followed by western blot with Catalog No:116964(ZNF24 antibody) at dilution of 1:800



Immunohistochemical of paraffin-embedded human ovary tumor using Catalog No:116964(ZNF24 antibody) at dilution of 1:50 (under 10x lens)



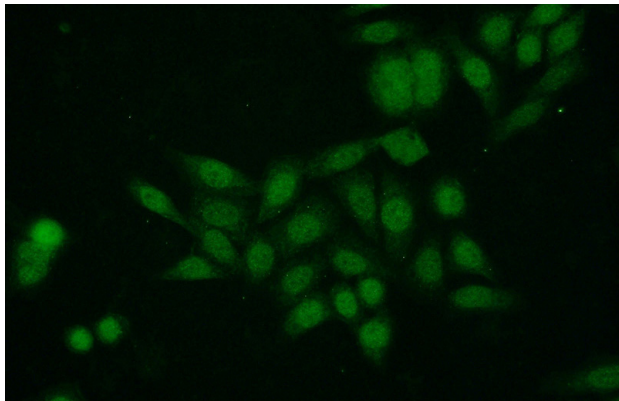
Immunohistochemical of paraffin-embedded

ZNF24 antibody



Catalog Number: 116964

human ovary tumor using Catalog
No:116964(ZNF24 antibody) at dilution of 1:50
(under 40x lens)



Immunofluorescent analysis of HeLa cells using
Catalog No:116964(ZNF24 Antibody) at dilution of
1:50 and Alexa Fluor 488-conjugated AffiniPure
Goat Anti-Rabbit IgG(H+L)