

ZC3HAV1L antibody



Catalog Number: 116930

Product name

ZC3HAV1L antibody

Specificity

Human; other species not tested.

Antibody description

ZC3HAV1L Rabbit Polyclonal antibody. Positive IHC detected in human kidney tissue. Positive WB detected in Jurkat cells, HeLa cells, HepG2 cells, SW 1990 cells. Observed molecular weight by Western-blot: 35-38kd

Preparation

This antibody was obtained by immunization of ZC3HAV1L recombinant protein (Accession Number: NM_080660). Purification method: Antigen affinity purified.

Formulation

PBS with 0.02% sodium azide and 50% glycerol pH 7.3.

Storage

Store at -20°C. DO NOT ALIQUOT

Clonality

Polyclonal

Ig Type

Rabbit IgG

Applications

ELISA, WB, IHC

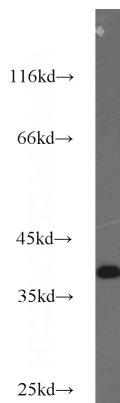
Dilutions

Recommended Dilution:

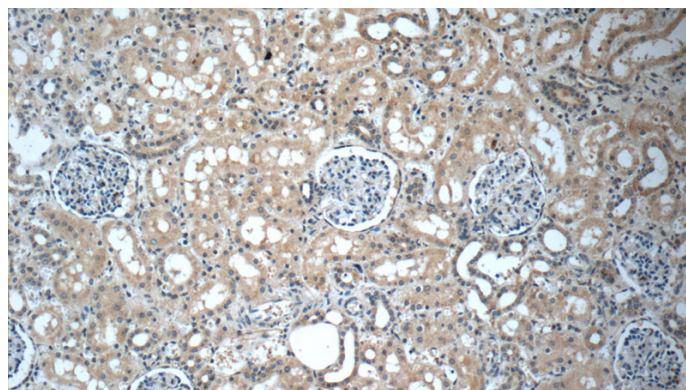
WB: 1:500-1:5000

IHC: 1:20-1:200

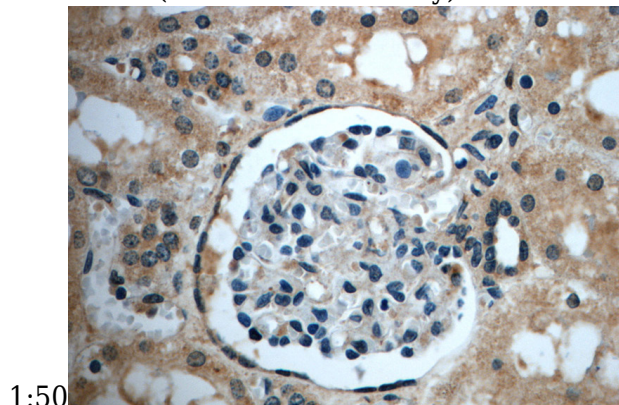
Validations



Jurkat cells were subjected to SDS PAGE followed by western blot with Catalog No:116930(ZC3HAV1L antibody) at dilution of 1:1000



Immunohistochemistry of paraffin-embedded human kidney slide using Catalog No:116930(ZC3HAV1L Antibody) at dilution of



1:50

Immunohistochemistry of paraffin-embedded human kidney slide using Catalog No:116930(ZC3HAV1L Antibody) at dilution of

ZC3HAV1L antibody



Catalog Number: 116930

1:50