

ZBTB1 antibody

Catalog Number: 116907

Product name

ZBTB1 antibody

IP: 1:200-1:1000

IF: 1:50-1:500

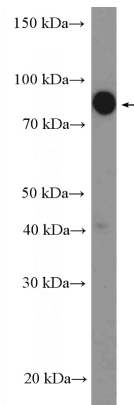
Specificity

Human; other species not tested.

Validations

Antibody description

ZBTB1 Rabbit Polyclonal antibody. Positive IF detected in HeLa cells. Positive WB detected in HeLa cells. Positive IP detected in HeLa cells. Observed molecular weight by Western-blot: 82 kDa



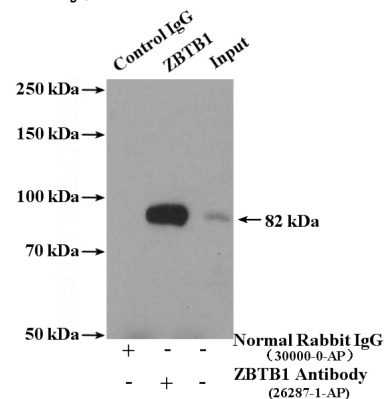
Preparation

This antibody was obtained by immunization of ZBTB1 recombinant protein (Accession Number: XM_047431088). Purification method: Antigen affinity purified.

HeLa cells were subjected to SDS PAGE followed by western blot with Catalog No:116907(ZBTB1 Antibody) at dilution of 1:300

Formulation

PBS with 0.1% sodium azide and 50% glycerol pH 7.3.



Storage

Store at -20°C. DO NOT ALIQUOT

IP Result of anti-ZBTB1 (IP:Catalog No:116907, 4ug; Detection:Catalog No:116907 1:300) with HeLa cells lysate 4000ug.

Clonality

Polyclonal

Ig Type

Rabbit IgG

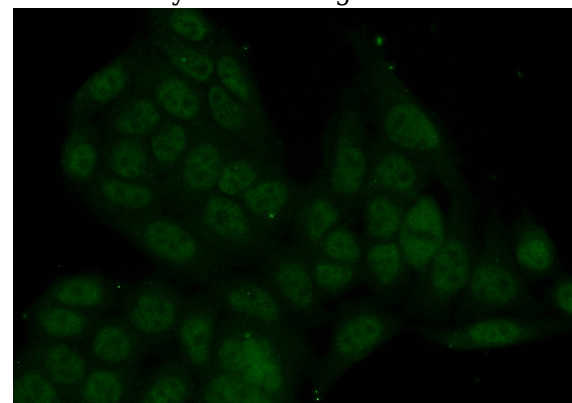
Applications

ELISA, WB, IP, IF

Dilutions

Recommended Dilution:

WB: 1:200-1:1000



Immunofluorescent analysis of (10% Formaldehyde) fixed HeLa cells using Catalog

ZBTB1 antibody



Catalog Number: 116907

No:116907(ZBTB1 Antibody) at dilution of 1:50

and Alexa Fluor 488-conjugated AffiniPure Goat
Anti-Rabbit IgG(H+L)