

# YY1 antibody

Catalog Number: 116900

## Product name

YY1 antibody

## Specificity

Human; other species not tested.

## Antibody description

YY1 Rabbit Polyclonal antibody. Positive WB detected in Jurkat cells, A549 cells, HEK-293 cells, HeLa cells. Positive IP detected in HeLa cells. Observed molecular weight by Western-blot: 68-70 kDa

## Preparation

This antibody was obtained by immunization of YY1 recombinant protein (Accession Number: NM\_003403). Purification method: Antigen affinity purified.

## Formulation

PBS with 0.02% sodium azide and 50% glycerol pH 7.3.

## Storage

Store at -20°C. DO NOT ALIQUOT

## Clonality

Polyclonal

## Ig Type

Rabbit IgG

## Applications

ELISA, WB, IP

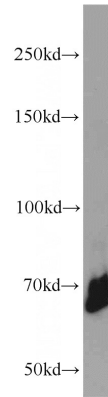
## Dilutions

Recommended Dilution:

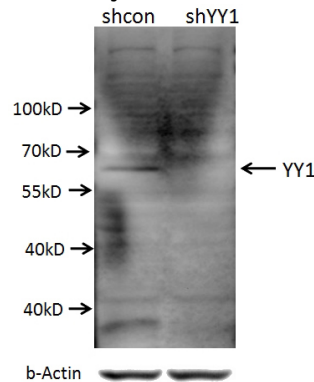
WB: 1:500-1:5000

IP: 1:200-1:2000

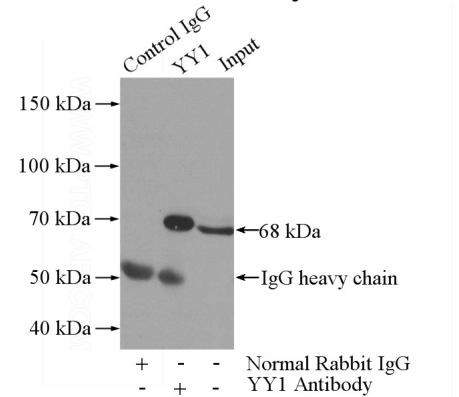
## Validations



Jurkat cells were subjected to SDS PAGE followed by western blot with Catalog No:117347(YY1 antibody) at dilution of 1:1000



A549 cells (shcontrol and shRNA of YY1) were subjected to SDS PAGE followed by western blot with Catalog No:117347 (YY1 antibody) at dilution



of 1:1000.

IP Result of anti-YY1 (IP:Catalog No:117347, 5ug; Detection:Catalog No:117347 1:700) with HeLa cells lysate 880ug.