

YRDC antibody



Catalog Number: 116892

Product name

YRDC antibody

WB: 1:500-1:5000

IHC: 1:50-1:500

Immunogen

[Human YRDC Recombinant protein \(His tag\)](#)

Specificity

Human; other species not tested.

Antibody description

YRDC Rabbit Polyclonal antibody. Positive WB detected in BxPC-3 cells. Positive IHC detected in human pancreas tissue. Observed molecular weight by Western-blot: 29 kDa

Preparation

This antibody was obtained by immunization of YRDC recombinant protein (Accession Number: NM_024640). Purification method: Antigen affinity purified.

Formulation

PBS with 0.1% sodium azide and 50% glycerol pH 7.3.

Storage

Store at -20°C. DO NOT ALIQUOT

Clonality

Polyclonal

Ig Type

Rabbit IgG

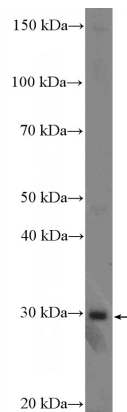
Applications

ELISA, WB, IHC

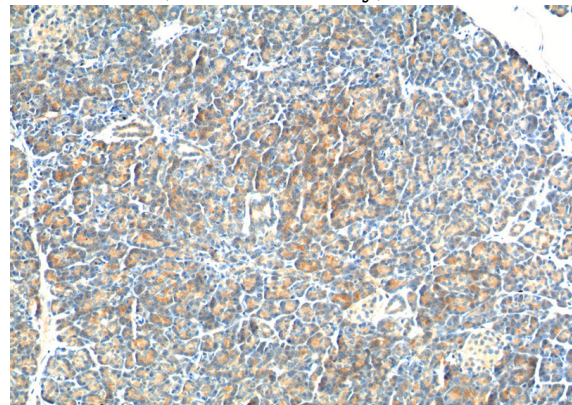
Dilutions

Recommended Dilution:

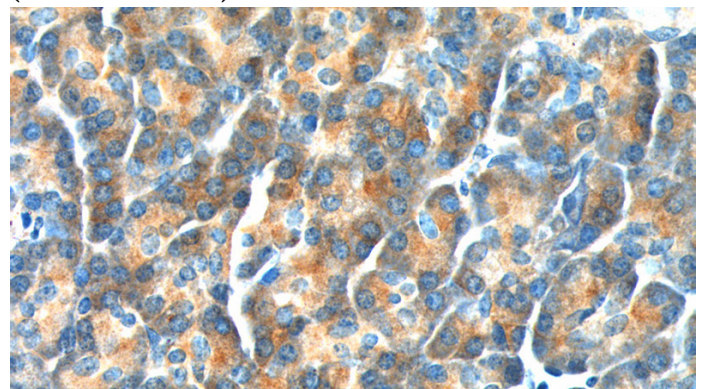
Validations



BxPC-3 cells were subjected to SDS PAGE followed by western blot with Catalog No:116892(YRDC Antibody) at dilution of 1:1000



Immunohistochemistry of paraffin-embedded human pancreas tissue slide using Catalog No:116892(YRDC Antibody) at dilution of 1:200 (under 10x lens).



Immunohistochemistry of paraffin-embedded

YRDC antibody



Catalog Number: 116892

human pancreas tissue slide using Catalog

No:116892(YRDC Antibody) at dilution of 1:200
(under 40x lens).