

YPEL5 antibody



Catalog Number: 116891

Product name

YPEL5 antibody

Specificity

Human, Mouse, Rat; other species not tested.

Antibody description

YPEL5 Rabbit Polyclonal antibody. Positive WB detected in mouse brain tissue, mouse testis tissue. Positive IHC detected in human prostate cancer tissue. Observed molecular weight by Western-blot: 14kd

Preparation

This antibody was obtained by immunization of YPEL5 recombinant protein (Accession Number: XM_017004318). Purification method: Antigen affinity purified.

Formulation

PBS with 0.1% sodium azide and 50% glycerol pH 7.3.

Storage

Store at -20°C. DO NOT ALIQUOT

Clonality

Polyclonal

Ig Type

Rabbit IgG

Applications

ELISA, WB, IHC

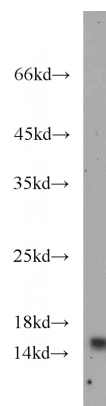
Dilutions

Recommended Dilution:

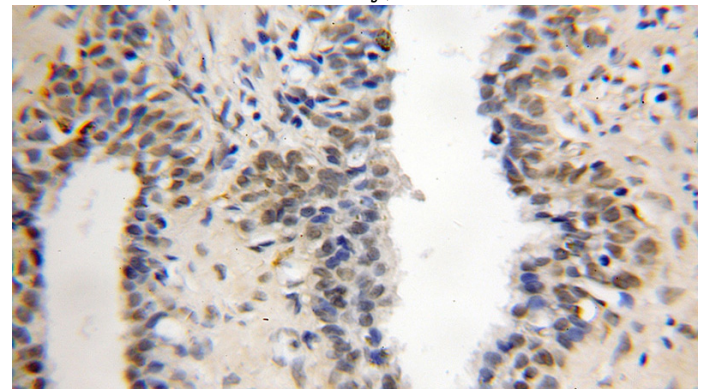
WB: 1:200-1:2000

IHC: 1:10-1:100

Validations



mouse brain tissue were subjected to SDS PAGE followed by western blot with Catalog No:116891(YPEL5 antibody) at dilution of 1:500



Immunohistochemical of paraffin-embedded human prostate cancer using Catalog No:116891(YPEL5 antibody) at dilution of 1:25 (under 10x lens)