

YPEL1 antibody



Catalog Number: 116889

Product name

YPEL1 antibody

IHC: 1:20-1:200

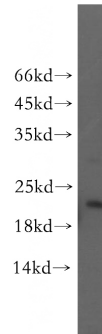
Specificity

human, mouse, rat; other species not tested.

Validations

Antibody description

YPEL1 Rabbit Polyclonal antibody. Positive IHC detected in human brain. Positive WB detected in human brain tissue, human liver tissue, human testis tissue. Observed molecular weight by Western-blot: 20-23kd



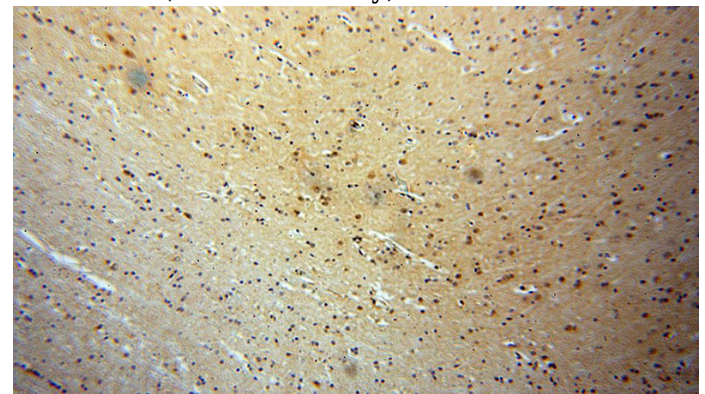
Preparation

This antibody was obtained by immunization of YPEL1 recombinant protein (Accession Number: NM_013313). Purification method: Antigen affinity purified.

human brain tissue were subjected to SDS PAGE followed by western blot with Catalog No:116889(YPEL1 antibody) at dilution of 1:400

Formulation

PBS with 0.02% sodium azide and 50% glycerol pH 7.3.



Storage

Store at -20°C. DO NOT ALIQUOT

Clonality

Polyclonal

Ig Type

Rabbit IgG

Applications

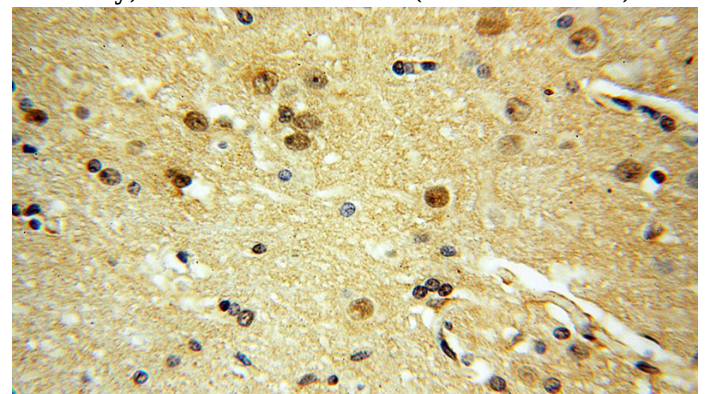
ELISA, WB, IHC

Dilutions

Recommended Dilution:

WB: 1:200-1:2000

Immunohistochemical of paraffin-embedded human brain using Catalog No:116889(YPEL1 antibody) at dilution of 1:400 (under 10x lens)



Immunohistochemical of paraffin-embedded human brain using Catalog No:116889(YPEL1 antibody) at dilution of 1:400 (under 40x lens)