

# YARS2 antibody

Catalog Number: 116881

## Product name

YARS2 antibody

IHC: 1:20-1:200

IF: 1:50-1:500

## Specificity

Human, Mouse, Rat; other species not tested.

## Antibody description

YARS2 Rabbit Polyclonal antibody. Positive WB detected in K-562 cells, HepG2 cells. Positive IHC detected in human testis tissue, human placenta tissue, human skin tissue, human spleen tissue. Positive IF detected in HepG2 cells. Observed molecular weight by Western-blot: 45-50 kDa

## Preparation

This antibody was obtained by immunization of YARS2 recombinant protein (Accession Number: NM\_001040436). Purification method: Antigen affinity purified.

## Formulation

PBS with 0.02% sodium azide and 50% glycerol pH 7.3.

## Storage

Store at -20°C. DO NOT ALIQUOT

## Clonality

Polyclonal

## Ig Type

Rabbit IgG

## Applications

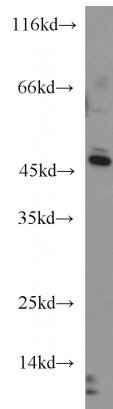
ELISA, WB, IHC, IF

## Dilutions

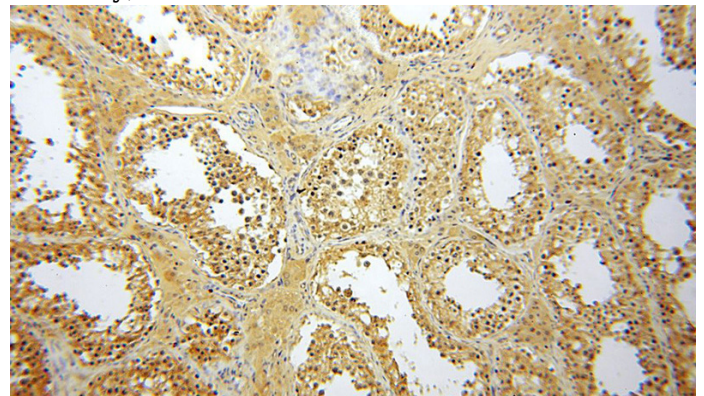
Recommended Dilution:

WB: 1:500-1:5000

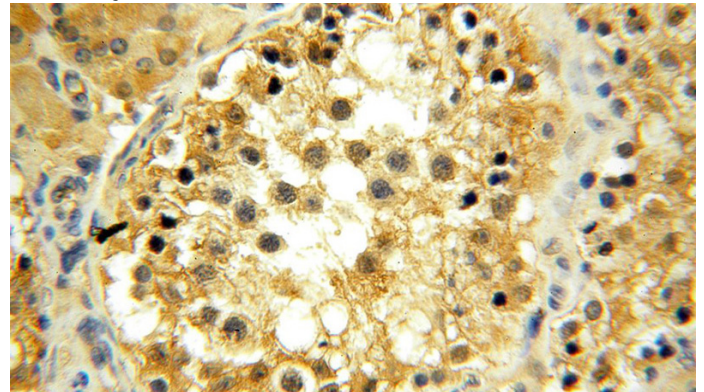
## Validations



K-562 cells were subjected to SDS PAGE followed by western blot with Catalog No:116881(YARS2 antibody) at dilution of 1:800



Immunohistochemical of paraffin-embedded human testis using Catalog No:116881(YARS2 antibody) at dilution of 1:100 (under 10x lens)



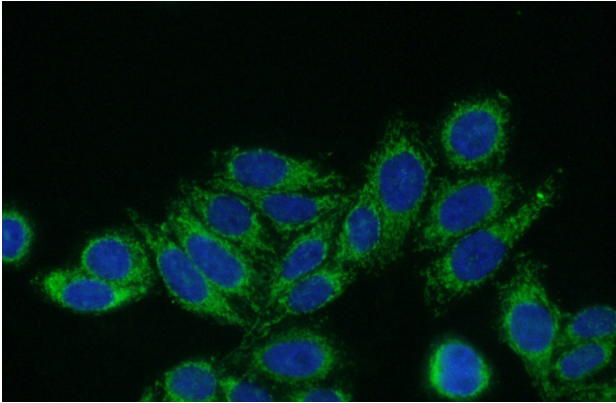
Immunohistochemical of paraffin-embedded human testis using Catalog No:116881(YARS2

# YARS2 antibody

Catalog Number: 116881

---

antibody) at dilution of 1:100 (under 40x lens)



Immunofluorescent analysis of (10% Formaldehyde) fixed HepG2 cells using Catalog No:116881(YARS2 Antibody) at dilution of 1:50 and Alexa Fluor 488-conjugated AffiniPure Goat Anti-Rabbit IgG(H+L)