

# XRCC2 antibody

Catalog Number: 116873

## Product name

XRCC2 antibody

## Specificity

Human; other species not tested.

## Antibody description

XRCC2 Rabbit Polyclonal antibody. Positive IP detected in K-562 cells. Positive WB detected in K-562 cells, HEK-293 cells. Observed molecular weight by Western-blot: 35-40 kDa

## Preparation

This antibody was obtained by immunization of XRCC2 recombinant protein (Accession Number: NM\_005431). Purification method: Antigen affinity purified.

## Formulation

PBS with 0.1% sodium azide and 50% glycerol pH 7.3.

## Storage

Store at -20°C. DO NOT ALIQUOT

## Clonality

Polyclonal

## Ig Type

Rabbit IgG

## Applications

ELISA, WB, IP

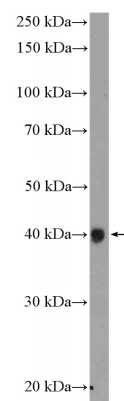
## Dilutions

Recommended Dilution:

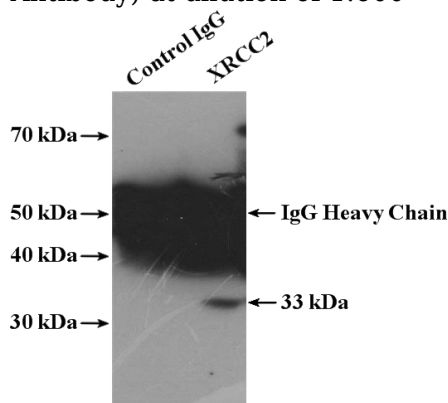
WB: 1:200-1:2000

IP: 1:200-1:2000

## Validations



K-562 cells were subjected to SDS PAGE followed by western blot with Catalog No:116873(XRCC2 Antibody) at dilution of 1:600



IP Result of anti-XRCC2 (IP:Catalog No:116873, 4ug; Detection:Catalog No:116873 1:500) with K-562 cells lysate 3200ug.