

WDR38 antibody

Catalog Number: 116865

Product name

WDR38 antibody

Specificity

Human; other species not tested.

Antibody description

WDR38 Rabbit Polyclonal antibody. Positive IHC detected in human breast cancer tissue, human skeletal muscle tissue.

Preparation

This antibody was obtained by immunization of WDR38 recombinant protein (Accession Number: NM_001045476). Purification method: Antigen affinity purified.

Formulation

PBS with 0.1% sodium azide and 50% glycerol pH 7.3.

Storage

Store at -20°C. DO NOT ALIQUOT

Clonality

Polyclonal

Ig Type

Rabbit IgG

Applications

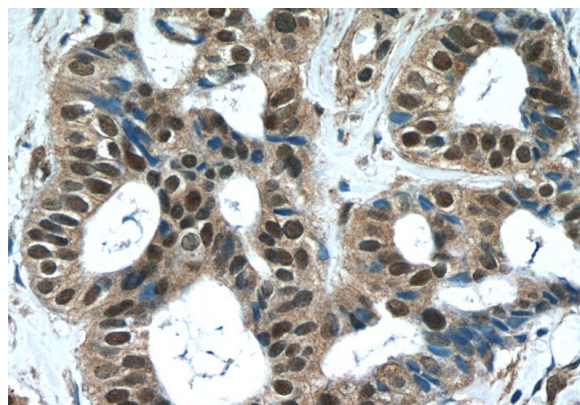
ELISA, IHC

Dilutions

Recommended Dilution:

IHC: 1:20-1:200

Validations



Immunohistochemistry of paraffin-embedded human breast cancer tissue slide using Catalog No:116865(WDR38 Antibody) at dilution of 1:50 (under 40x lens)