

WDR24 antibody



Catalog Number: 116861

Product name

WDR24 antibody

WB: 1:500-1:5000

IP: 1:200-1:2000

Specificity

Human, Mouse; other species not tested.

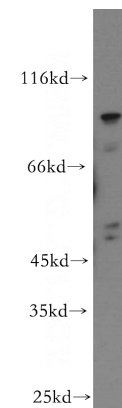
IHC: 1:20-1:200

IF: 1:10-1:100

Antibody description

WDR24 Rabbit Polyclonal antibody. Positive IP detected in HeLa cells. Positive WB detected in HeLa cells, mouse brain tissue. Positive IF detected in HeLa cells, HepG2 cells. Positive IHC detected in human ovary tissue, human colon tissue. Observed molecular weight by Western-blot: 102 kDa, 88 kDa

Validations



Preparation

This antibody was obtained by immunization of WDR24 recombinant protein (Accession Number: NM_032259). Purification method: Antigen affinity purified.

HeLa cells were subjected to SDS PAGE followed by western blot with Catalog No:116861(WDR24 antibody) at dilution of 1:500

Formulation

PBS with 0.02% sodium azide and 50% glycerol pH 7.3.

Storage

Store at -20°C. DO NOT ALIQUOT

Clonality

Polyclonal

Ig Type

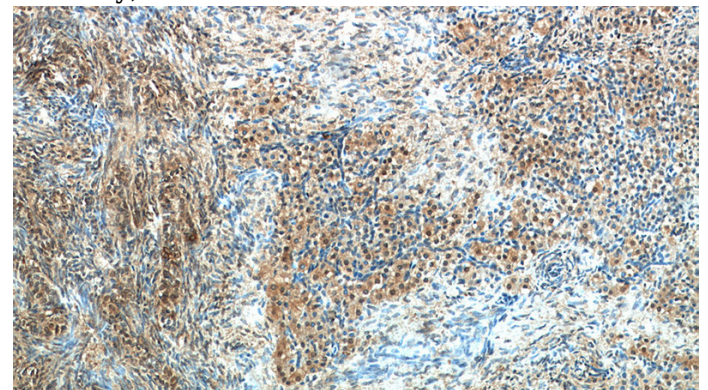
Rabbit IgG

Applications

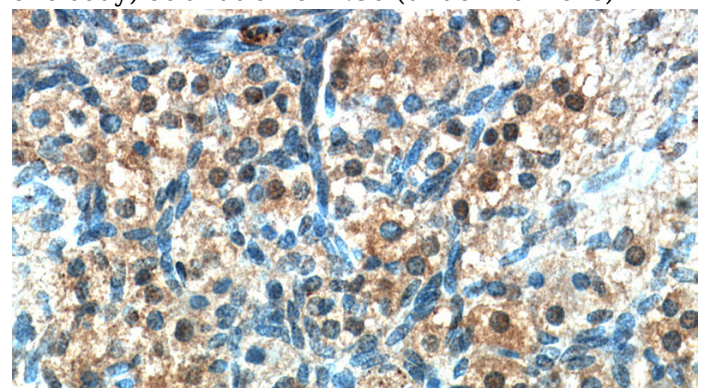
ELISA, WB, IHC, IF, IP

Dilutions

Recommended Dilution:



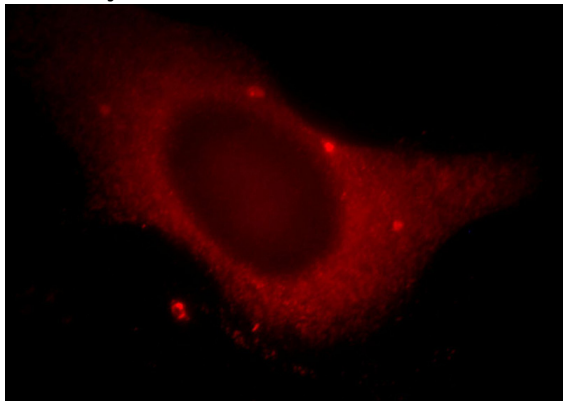
Immunohistochemical of paraffin-embedded human ovary using Catalog No:116861(WDR24 antibody) at dilution of 1:50 (under 10x lens)



WDR24 antibody

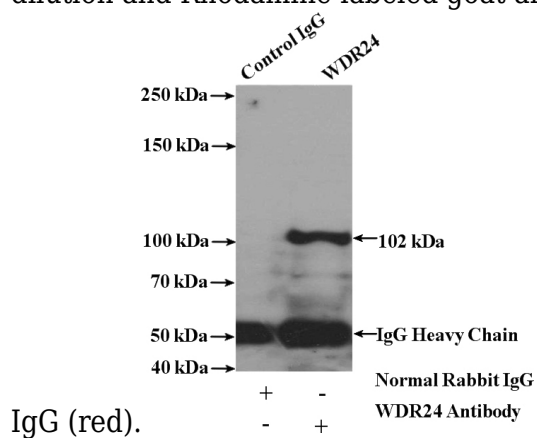
Catalog Number: 116861

Immunohistochemical of paraffin-embedded human ovary using Catalog No:116861(WDR24 antibody) at dilution of 1:50 (under 40x lens)



Immunofluorescent analysis of HeLa cells, using WDR24 antibody Catalog No:116861 at 1:25

dilution and Rhodamine-labeled goat anti-rabbit



IP Result of anti-WDR24 (IP:Catalog No:116861, 4ug; Detection:Catalog No:116861 1:500) with HeLa cells lysate 3200ug.