

# WDR20 antibody



Catalog Number: 116859

## Product name

WDR20 antibody

## Immunogen

[Human WDR20 Recombinant protein \(His tag\)](#)

## Specificity

Human, Mouse; other species not tested.

## Antibody description

WDR20 Rabbit Polyclonal antibody. Positive WB detected in HeLa cells. Observed molecular weight by Western-blot: 63 kDa

## Preparation

This antibody was obtained by immunization of WDR20 recombinant protein (Accession Number: NM\_001242415). Purification method: Antigen affinity purified.

## Formulation

PBS with 0.1% sodium azide and 50% glycerol pH 7.3.

## Storage

Store at -20°C. DO NOT ALIQUOT

## Clonality

Polyclonal

## Ig Type

Rabbit IgG

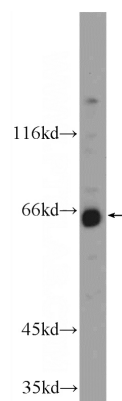
## Applications

ELISA, WB

## Dilutions

Recommended Dilution:  
WB: 1:500-1:5000

## Validations



HeLa cells were subjected to SDS PAGE followed by western blot with Catalog No:116859(WDR20 Antibody) at dilution of 1:1000