

# WDR16 antibody



Catalog Number: 116856

## Product name

WDR16 antibody

## Specificity

Human, Mouse, Rat; other species not tested.

## Antibody description

WDR16 Rabbit Polyclonal antibody. Positive IHC detected in human testis tissue, human liver cancer tissue.

## Preparation

This antibody was obtained by immunization of WDR16 recombinant protein (Accession Number: NM\_145054). Purification method: Antigen affinity purified.

## Formulation

PBS with 0.1% sodium azide and 50% glycerol pH 7.3.

## Storage

Store at -20°C. DO NOT ALIQUOT

## Clonality

Polyclonal

## Ig Type

Rabbit IgG

## Applications

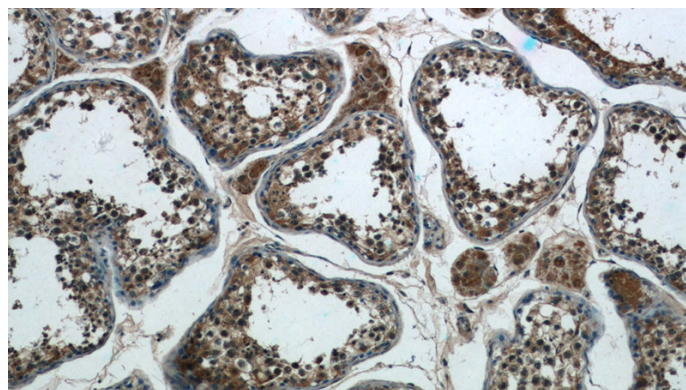
ELISA, IHC

## Dilutions

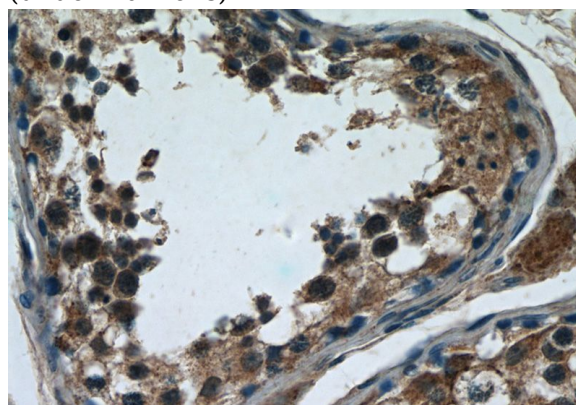
Recommended Dilution:

IHC: 1:20-1:200

## Validations



Immunohistochemistry of paraffin-embedded human testis tissue slide using Catalog No:116856(WDR16 Antibody) at dilution of 1:50 (under 10x lens)



Immunohistochemistry of paraffin-embedded human testis tissue slide using Catalog No:116856(WDR16 Antibody) at dilution of 1:50 (under 40x lens)