

# WBP11 antibody

Catalog Number: 116846

## Product name

WBP11 antibody

IP: 1:200-1:2000

IF: 1:10-1:100

## Specificity

Human,Mouse,Rat; other species not tested.

## Antibody description

WBP11 Rabbit Polyclonal antibody. Positive IF detected in A431 cells, HeLa cells. Positive IP detected in mouse heart tissue. Positive WB detected in mouse heart tissue, HeLa cells. Observed molecular weight by Western-blot: 66-70 kDa

## Preparation

This antibody was obtained by immunization of WBP11 recombinant protein (Accession Number: NM\_016312). Purification method: Antigen affinity purified.

## Formulation

PBS with 0.02% sodium azide and 50% glycerol pH 7.3.

## Storage

Store at -20°C. DO NOT ALIQUOT

## Clonality

Polyclonal

## Ig Type

Rabbit IgG

## Applications

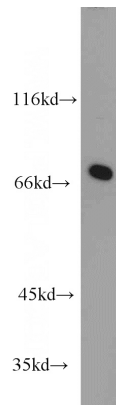
ELISA, WB, IP, IF

## Dilutions

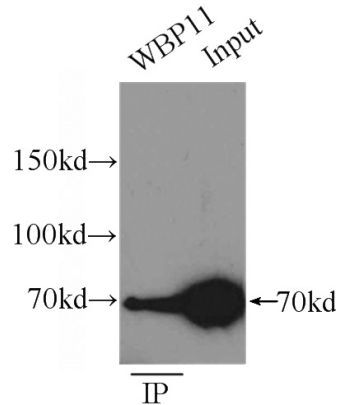
Recommended Dilution:

WB: 1:500-1:5000

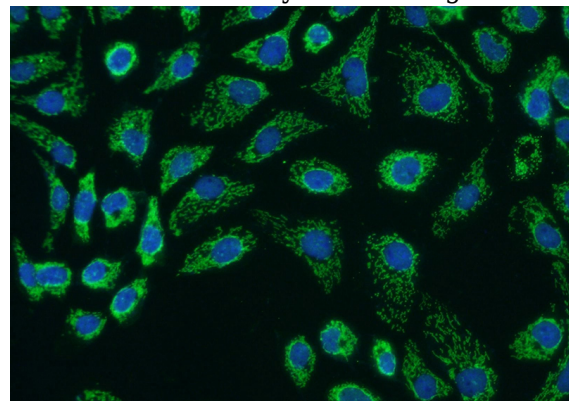
## Validations



mouse heart tissue were subjected to SDS PAGE followed by western blot with Catalog No:116846(WBP11 antibody) at dilution of 1:1000



IP Result of anti-WBP11 (IP:Catalog No:116846, 3ug; Detection:Catalog No:116846 1:500) with mouse heart tissue lysate 6000ug.



Immunofluorescent analysis of A431 cells using Catalog No:116846(WBP11 Antibody) at dilution

# WBP11 antibody



Catalog Number: 116846

---

of 1:25 and Alexa Fluor 488-conjugated AffiniPure Goat Anti-Rabbit IgG(H+L)