

# WASP antibody



Catalog Number: 116844

## Product name

WASP antibody

WB: 1:200-1:2000

IP: 1:200-1:2000

## Specificity

Human, Mouse; other species not tested.

IHC: 1:20-1:200

## Antibody description

WASP Rabbit Polyclonal antibody. Positive IHC detected in human spleen tissue, human lymphoma tissue, human tonsillitis tissue. Positive WB detected in Raji cells, HL-60 cells, K-562 cells, mouse spleen tissue. Positive IP detected in Raji cells. Observed molecular weight by Western-blot: 55-62 kDa

## Preparation

This antibody was obtained by immunization of WASP recombinant protein (Accession Number: NM\_000377). Purification method: Antigen affinity purified.

## Formulation

PBS with 0.1% sodium azide and 50% glycerol pH 7.3.

## Storage

Store at -20°C. DO NOT ALIQUOT

## Clonality

Polyclonal

## Ig Type

Rabbit IgG

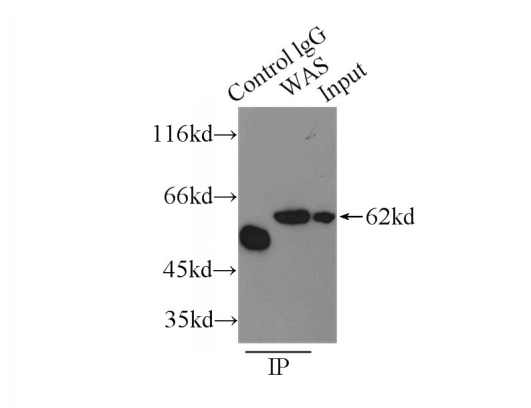
## Applications

ELISA, IP, WB, IHC

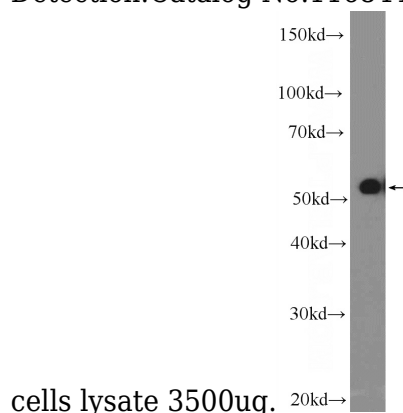
## Dilutions

Recommended Dilution:

## Validations

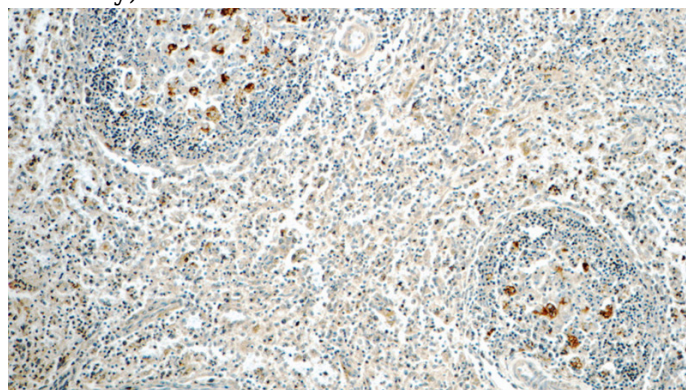


IP Result of anti-WASP (IP:Catalog No:116844, 3ug; Detection:Catalog No:116844 1:500) with Raji



cells lysate 3500ug.

Raji cells were subjected to SDS PAGE followed by western blot with Catalog No:116844(WASP Antibody) at dilution of 1:600



Immunohistochemistry of paraffin-embedded

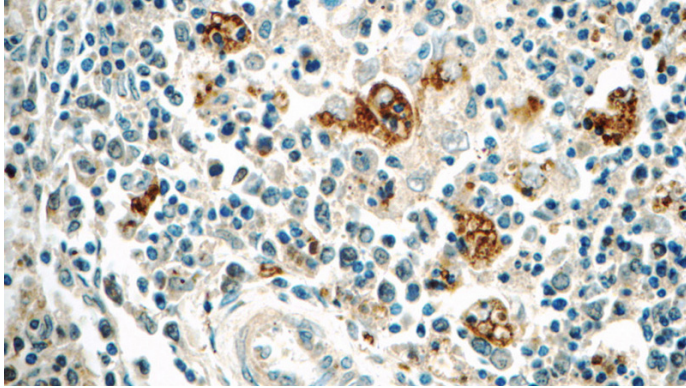
# WASP antibody



Catalog Number: 116844

---

human spleen tissue slide using Catalog  
No:116844(WAS Antibody) at dilution of 1:50  
(under 10x lens)



Immunohistochemistry of paraffin-embedded  
human spleen tissue slide using Catalog  
No:116844(WAS Antibody) at dilution of 1:50  
(under 40x lens)