

WDR55 antibody



Catalog Number: 116812

Product name

WDR55 antibody

IP: 1:200-1:1000

IHC: 1:20-1:200

Specificity

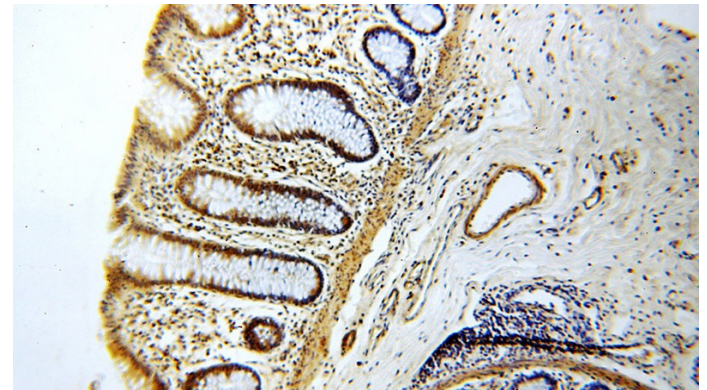
Human; other species not tested.

IF: 1:10-1:100

Validations

Antibody description

WDR55 Rabbit Polyclonal antibody. Positive IF detected in HepG2 cells. Positive IHC detected in human colon tissue. Positive WB detected in HeLa cells, HEK-293 cells, Jurkat cells. Positive IP detected in HeLa cells. Observed molecular weight by Western-blot: 42-50 kDa



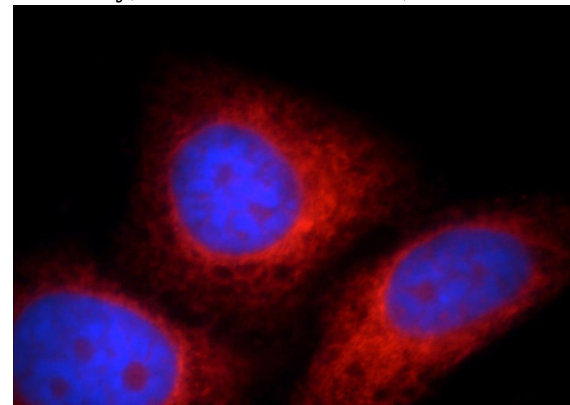
Preparation

This antibody was obtained by immunization of WDR55 recombinant protein (Accession Number: BC002482). Purification method: Antigen affinity purified.

Immunohistochemical of paraffin-embedded human colon using Catalog No:116812(WDR55 antibody) at dilution of 1:50 (under 10x lens)

Formulation

PBS with 0.02% sodium azide and 50% glycerol pH 7.3.



Storage

Store at -20°C. DO NOT ALIQUOT

Clonality

Polyclonal

Ig Type

Rabbit IgG

Applications

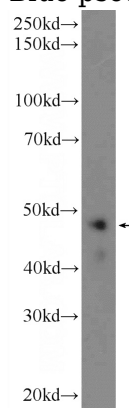
ELISA, IF, IHC, WB, IP

Dilutions

Recommended Dilution:

WB: 1:200-1:1000

Immunofluorescent analysis of HepG2 cells, using WDR55 antibody Catalog No:116812 at 1:25 dilution and Rhodamine-labeled goat anti-rabbit IgG (red). Blue pseudocolor = DAPI (fluorescent



DNA dye).

WDR55 antibody

Catalog Number: 116812

HeLa cells were subjected to SDS PAGE followed by western blot with Catalog No:116812(WDR55 Antibody) at dilution of 1:300

IP Result of anti-WDR55 (IP:Catalog No:116812, 4ug; Detection:Catalog No:116812 1:300) with HeLa cells lysate 3440ug.

