

# VSTM1 antibody



Catalog Number: 116801

## Product name

VSTM1 antibody

## Specificity

Human; other species not tested.

## Antibody description

VSTM1 Rabbit Polyclonal antibody. Positive FC detected in HL-60 cells. Positive WB detected in HL-60 cells. Observed molecular weight by Western-blot: 40 kDa

## Preparation

This antibody was obtained by immunization of VSTM1 recombinant protein (Accession Number: XM\_017026666). Purification method: Antigen affinity purified.

## Formulation

PBS with 0.1% sodium azide and 50% glycerol pH 7.3.

## Storage

Store at -20°C. DO NOT ALIQUOT

## Clonality

Polyclonal

## Ig Type

Rabbit IgG

## Applications

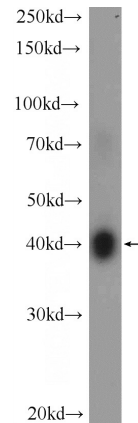
ELISA, WB, FC

## Dilutions

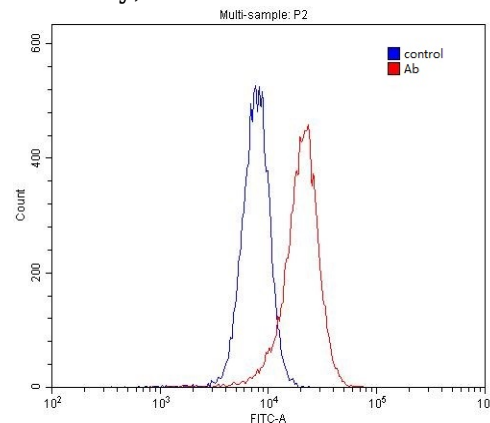
Recommended Dilution:

WB: 1:200-1:1000

## Validations



HL-60 cells were subjected to SDS PAGE followed by western blot with Catalog No:116801(VSTM1 Antibody) at dilution of 1:300



1X10<sup>6</sup> HL-60 cells were stained with 0.2ug VSTM1 antibody (Catalog No:116801, red) and control antibody (blue). Fixed with 4% PFA blocked with 3% BSA (30 min). Alexa Fluor 488-conjugated AffiniPure Goat Anti-Rabbit IgG(H+L) with dilution 1:1500.