

# UQCRC1 antibody



Catalog Number: 116635

## Product name

UQCRC1 antibody

## Specificity

Human, Mouse, Rat; other species not tested.

## Antibody description

UQCRC1 Rabbit Polyclonal antibody. Positive IP detected in HeLa cells. Positive WB detected in human brain tissue, HeLa cells, HepG2 cells, human heart tissue, human skeletal muscle tissue, L02 cells, MCF7 cells, mouse brain tissue, mouse kidney tissue, mouse large intestine tissue, mouse skeletal muscle tissue, mouse spleen tissue. Positive IF detected in HepG2 cells. Positive IHC detected in human heart tissue, human liver tissue. Observed molecular weight by Western-blot: 45kd

## Preparation

This antibody was obtained by immunization of UQCRC1 recombinant protein (Accession Number: NM\_003365). Purification method: Antigen affinity purified.

## Formulation

PBS with 0.02% sodium azide and 50% glycerol pH 7.3.

## Storage

Store at -20°C. DO NOT ALIQUOT

## Clonality

Polyclonal

## Ig Type

Rabbit IgG

## Applications

ELISA, WB, IHC, IF, IP

## Dilutions

Recommended Dilution:

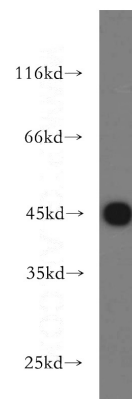
WB: 1:1000-1:10000

IP: 1:200-1:2000

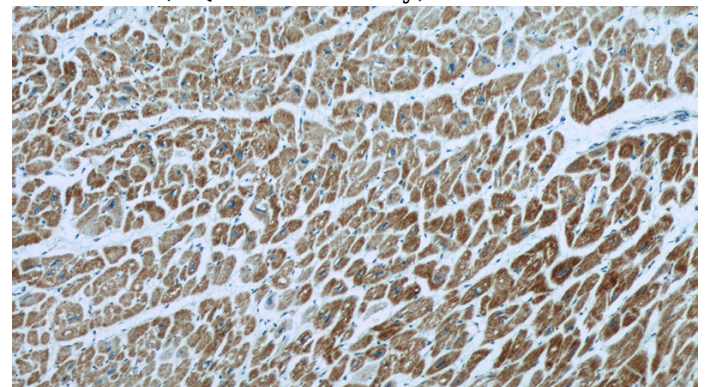
IHC: 1:20-1:200

IF: 1:10-1:100

## Validations



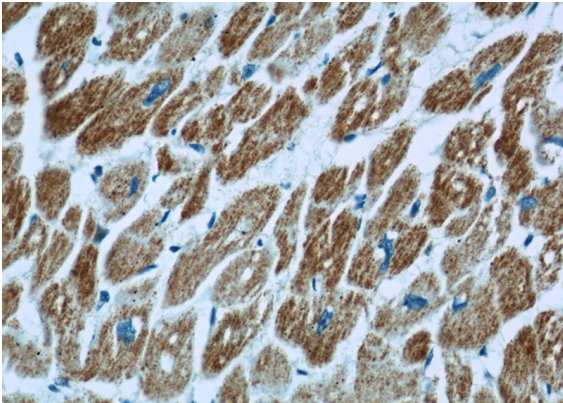
human brain tissue were subjected to SDS PAGE followed by western blot with Catalog No:116635(UQCRC1 antibody) at dilution of 1:500



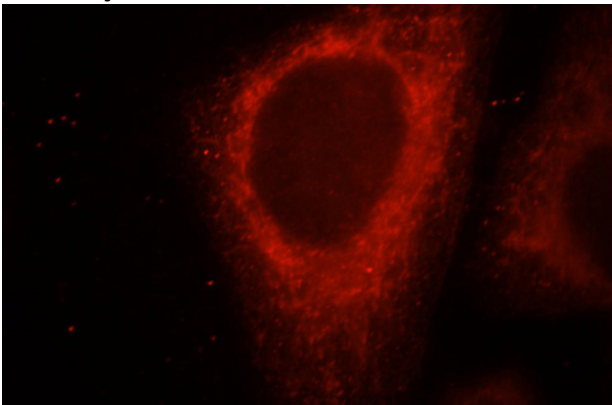
Immunohistochemical of paraffin-embedded human heart using Catalog No:116635(UQCRC1 antibody) at dilution of 1:100 (under 10x lens)

# UQCRC1 antibody

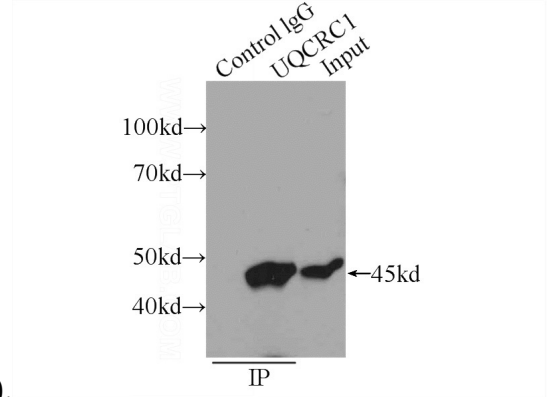
Catalog Number: 116635



Immunohistochemical of paraffin-embedded human heart using Catalog No:116635(UQCRC1 antibody) at dilution of 1:100 (under 40x lens)



Immunofluorescent analysis of HepG2 cells, using UQCRC1 antibody Catalog No:116635 at 1:25 dilution and Rhodamine-labeled goat anti-rabbit



IgG (red).

IP Result of anti-UQCRC1 (IP:Catalog No:116635, 4ug; Detection:Catalog No:116635 1:500) with HeLa cells lysate 1600ug.