

# USP28 antibody

Catalog Number: 116603

## Product name

USP28 antibody

IP: 1:200-1:2000

IHC: 1:20-1:200

## Specificity

Human, Mouse, Rat; other species not tested.

## Antibody description

USP28 Rabbit Polyclonal antibody. Positive WB detected in HeLa cells. Positive IP detected in HeLa cells. Positive IHC detected in human breast cancer tissue. Observed molecular weight by Western-blot: 135 kDa

## Preparation

This antibody was obtained by immunization of USP28 recombinant protein (Accession Number: NM\_001346273). Purification method: Antigen affinity purified.

## Formulation

PBS with 0.02% sodium azide and 50% glycerol pH 7.3.

## Storage

Store at -20°C. DO NOT ALIQUOT

## Clonality

Polyclonal

## Ig Type

Rabbit IgG

## Applications

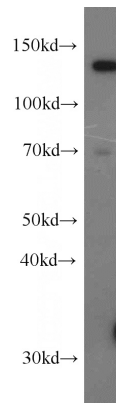
ELISA, WB, IHC, IP

## Dilutions

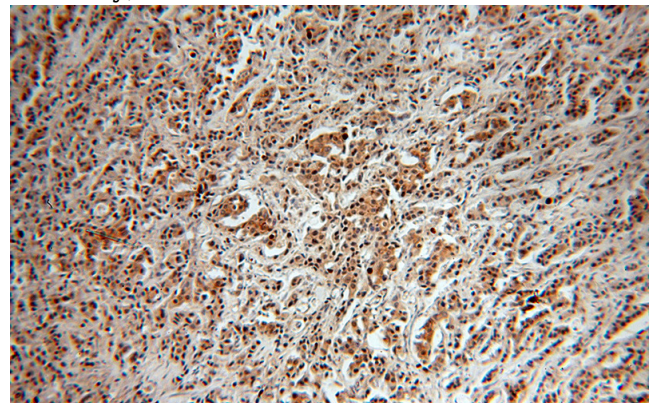
Recommended Dilution:

WB: 1:500-1:5000

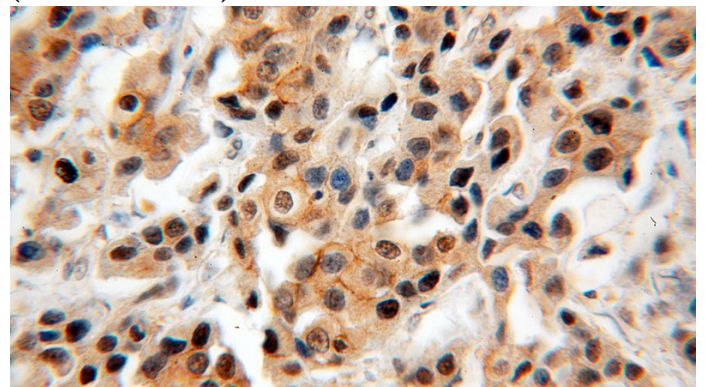
## Validations



HeLa cells were subjected to SDS PAGE followed by western blot with Catalog No:116603(USP28 antibody) at dilution of 1:1000



Immunohistochemical of paraffin-embedded human breast cancer using Catalog No:116603(USP28 antibody) at dilution of 1:50 (under 10x lens)



Immunohistochemical of paraffin-embedded

# USP28 antibody

Catalog Number: 116603

human breast cancer using Catalog No:116603(USP28 antibody) at dilution of 1:50 (under 40x lens)

IP Result of anti-USP28 (IP:Catalog No:116603, 4ug; Detection:Catalog No:116603 1:600) with HeLa cells lysate 2800ug.

