

# UBE4B antibody

Catalog Number: 116544

## Product name

UBE4B antibody

IP: 1:1000-1:10000

IHC: 1:20-1:200

## Specificity

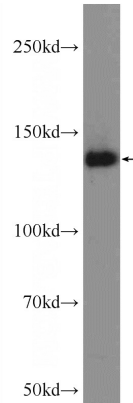
Human, Mouse, Rat; other species not tested.

IF: 1:10-1:100

## Antibody description

UBE4B Rabbit Polyclonal antibody. Positive IHC detected in human heart tissue. Positive IF detected in HeLa cells. Positive WB detected in HeLa cells, mouse testis tissue, SH-SY5Y cells. Positive IP detected in HeLa cells. Observed molecular weight by Western-blot: 146 kDa

## Validations



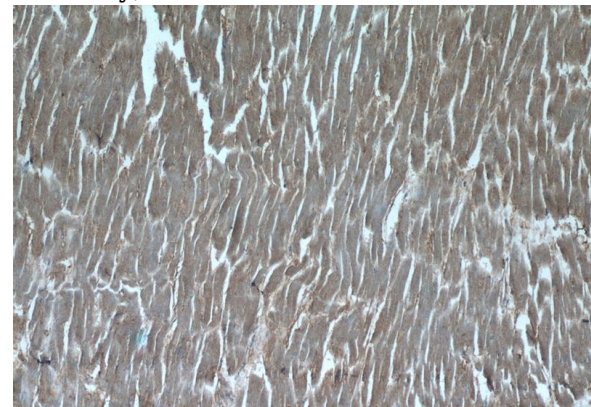
## Preparation

This antibody was obtained by immunization of UBE4B recombinant protein (Accession Number: NM\_006048). Purification method: Antigen affinity purified.

HeLa cells were subjected to SDS PAGE followed by western blot with Catalog No:116544(UBE4B Antibody) at dilution of 1:3000

## Formulation

PBS with 0.02% sodium azide and 50% glycerol pH 7.3.



## Storage

Store at -20°C. DO NOT ALIQUOT

## Clonality

Polyclonal

## Ig Type

Rabbit IgG

## Applications

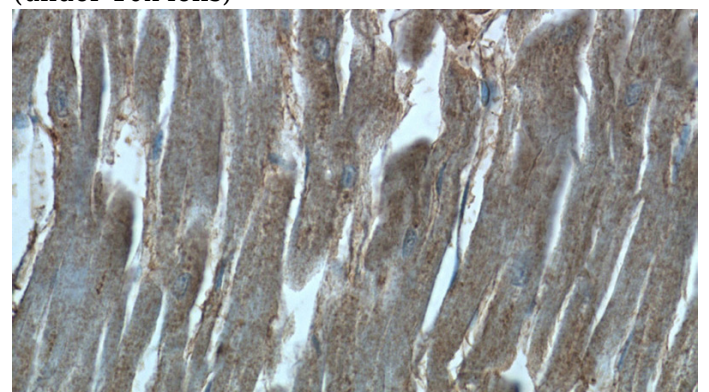
ELISA, IF, IHC, WB, IP

## Dilutions

Recommended Dilution:

WB: 1:1000-1:10000

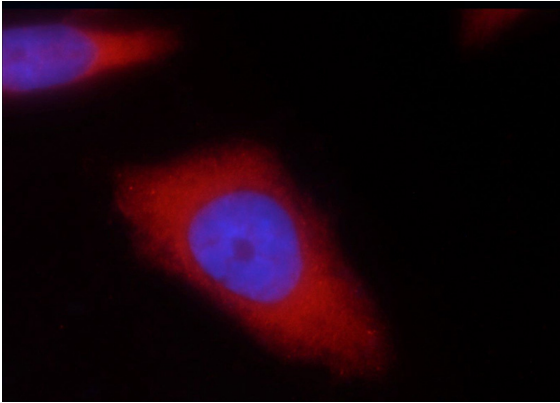
Immunohistochemistry of paraffin-embedded human heart tissue slide using Catalog No:116544(UBE4B Antibody) at dilution of 1:50 (under 10x lens)



# UBE4B antibody

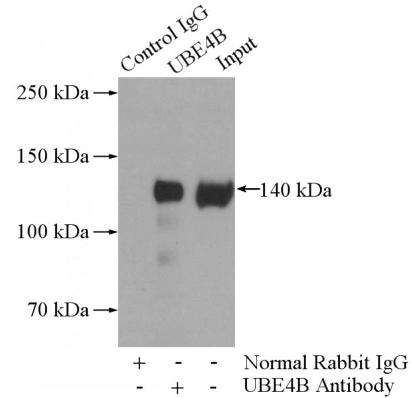
Catalog Number: 116544

Immunohistochemistry of paraffin-embedded human heart tissue slide using Catalog No:116544(UBE4B Antibody) at dilution of 1:50 (under 40x lens)



Immunofluorescent analysis of HeLa cells using

Catalog No:116544(UBE4B Antibody) at dilution of 1:25 and Rhodamine-Goat anti-Rabbit IgG



IP Result of anti-UBE4B (IP:Catalog No:116544, 4ug; Detection:Catalog No:116544 1:2000) with HeLa cells lysate 1200ug.