

# UBE2U antibody



Catalog Number: 116538

## Product name

UBE2U antibody

IHC: 1:20-1:200

IF: 1:10-1:100

## Specificity

Human, Mouse; other species not tested.

## Antibody description

UBE2U Rabbit Polyclonal antibody. Positive IF detected in HepG2 cells. Positive IHC detected in human kidney tissue. Positive WB detected in human heart tissue, mouse heart tissue. Observed molecular weight by Western-blot: 38kd

## Preparation

This antibody was obtained by immunization of UBE2U recombinant protein (Accession Number: NM\_152489). Purification method: Antigen affinity purified.

## Formulation

PBS with 0.02% sodium azide and 50% glycerol pH 7.3.

## Storage

Store at -20°C. DO NOT ALIQUOT

## Clonality

Polyclonal

## Ig Type

Rabbit IgG

## Applications

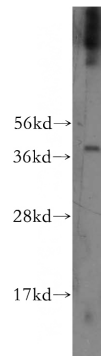
ELISA, WB, IHC, IF

## Dilutions

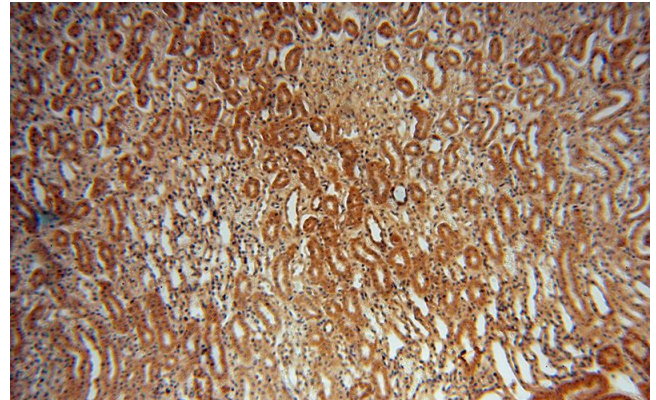
Recommended Dilution:

WB: 1:200-1:2000

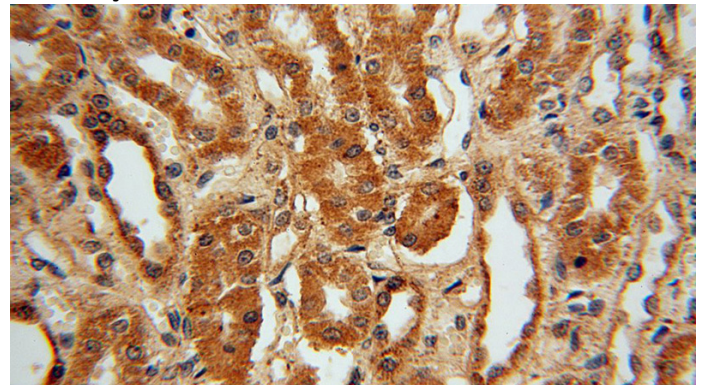
## Validations



human heart tissue were subjected to SDS PAGE followed by western blot with Catalog No:116538(UBE2U antibody) at dilution of 1:500



Immunohistochemical of paraffin-embedded human kidney using Catalog No:116538(UBE2U antibody) at dilution of 1:50 (under 10x lens)



Immunohistochemical of paraffin-embedded human kidney using Catalog No:116538(UBE2U

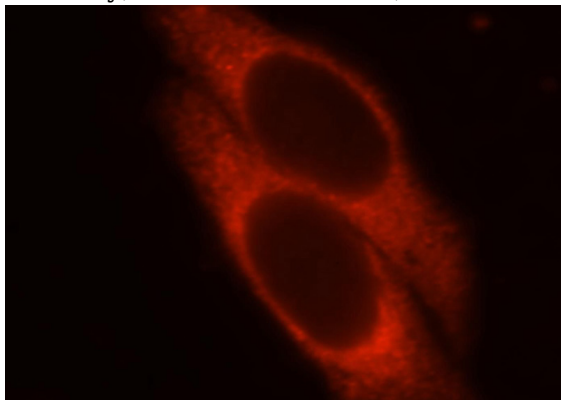
# UBE2U antibody



Catalog Number: 116538

---

antibody) at dilution of 1:50 (under 40x lens)



Immunofluorescent analysis of HepG2 cells, using UBE2U antibody Catalog No:116538 at 1:25 dilution and Rhodamine-labeled goat anti-rabbit IgG (red).