

UBE2T/HSPC150 antibody



Catalog Number: 116537

Product name

UBE2T/HSPC150 antibody

IP: 1:200-1:2000

IF: 1:50-1:500

Specificity

Human, Mouse, Rat; other species not tested.

Antibody description

UBE2T/HSPC150 Rabbit Polyclonal antibody. Positive IP detected in HeLa cells. Positive WB detected in Jurkat cells, HeLa cells, K-562 cells. Positive IF detected in HeLa cells, HepG2 cells. Observed molecular weight by Western-blot: 23 kDa

Preparation

This antibody was obtained by immunization of UBE2T/HSPC150 recombinant protein (Accession Number: NM_014176). Purification method: Antigen affinity purified.

Formulation

PBS with 0.1% sodium azide and 50% glycerol pH 7.3.

Storage

Store at -20°C. DO NOT ALIQUOT

Clonality

Polyclonal

Ig Type

Rabbit IgG

Applications

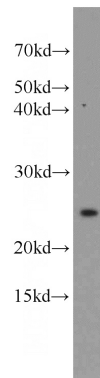
ELISA, WB, IP, IF

Dilutions

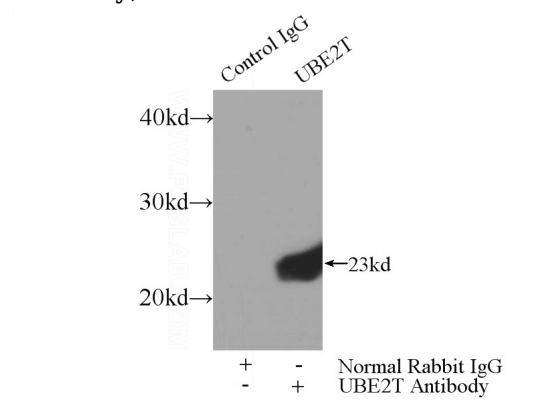
Recommended Dilution:

WB: 1:200-1:2000

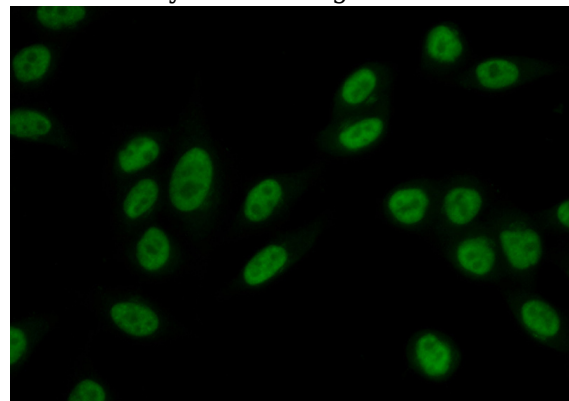
Validations



Jurkat cells were subjected to SDS PAGE followed by western blot with Catalog No:116537(UBE2T antibody) at dilution of 1:800



IP Result of anti-UBE2T (IP:Catalog No:116537, 3ug; Detection:Catalog No:116537 1:500) with HeLa cells lysate 3000ug.



Immunofluorescent analysis of (10% Formaldehyde) fixed HeLa cells using Catalog

UBE2T/HSPC150 antibody



Catalog Number: 116537

No:116537(UBE2T Antibody) at dilution of 1:50

and Alexa Fluor 488-conjugated AffiniPure Goat
Anti-Rabbit IgG(H+L)