

UBE2L3 antibody

Catalog Number: 116530

Product name

UBE2L3 antibody

Specificity

Human, Mouse, Rat; other species not tested.

Antibody description

UBE2L3 Rabbit Polyclonal antibody. Positive IP detected in mouse kidney tissue. Positive WB detected in HeLa cells, A431 cells, HEK-293 cells, K-562 cells, MCF7 cells, mouse kidney tissue, mouse testis tissue, NIH/3T3 cells, rat kidney tissue. Observed molecular weight by Western-blot: 18 kDa

Preparation

This antibody was obtained by immunization of UBE2L3 recombinant protein (Accession Number: NM_003347). Purification method: Antigen affinity purified.

Formulation

PBS with 0.02% sodium azide and 50% glycerol pH 7.3.

Storage

Store at -20°C. DO NOT ALIQUOT

Clonality

Polyclonal

Ig Type

Rabbit IgG

Applications

ELISA, WB, IP

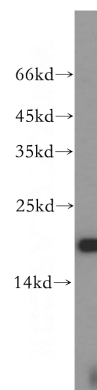
Dilutions

Recommended Dilution:

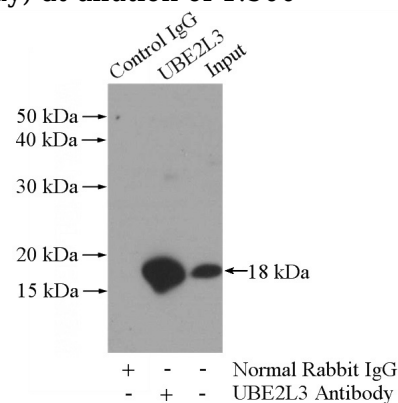
WB: 1:1000-1:10000

IP: 1:1000-1:10000

Validations



HeLa cells were subjected to SDS PAGE followed by western blot with Catalog No:116530(UBE2L3 antibody) at dilution of 1:500



IP Result of anti-UBE2L3 (IP:Catalog No:116530, 3ug; Detection:Catalog No:116530 1:2000) with mouse kidney tissue lysate 4000ug.