

# UBE2E3 antibody

Catalog Number: 116523

## Product name

UBE2E3 antibody

## Specificity

human, mouse, rat; other species not tested.

## Antibody description

UBE2E3 Rabbit Polyclonal antibody. Positive WB detected in Jurkat cells, mouse kidney tissue, mouse liver tissue, Y79 cells. Positive IHC detected in human heart. Observed molecular weight by Western-blot: 23-27kd

## Preparation

This antibody was obtained by immunization of UBE2E3 recombinant protein (Accession Number: NM\_182678). Purification method: Antigen affinity purified.

## Formulation

PBS with 0.1% sodium azide and 50% glycerol pH 7.3.

## Storage

Store at -20°C. DO NOT ALIQUOT

## Clonality

Polyclonal

## Ig Type

Rabbit IgG

## Applications

ELISA, WB, IHC

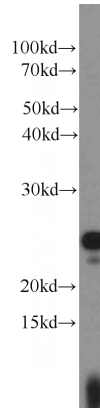
## Dilutions

Recommended Dilution:

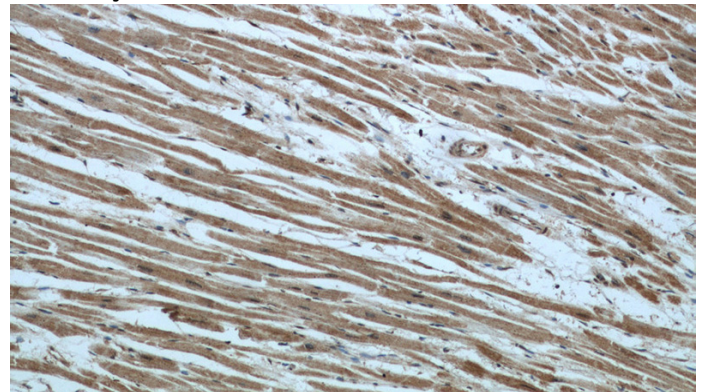
WB: 1:500-1:5000

IHC: 1:20-1:200

## Validations



Jurkat cells were subjected to SDS PAGE followed by western blot with Catalog No:116523(UBE2E3 antibody) at dilution of 1:1000



Immunohistochemical of paraffin-embedded human heart using Catalog No:116523(UBE2E3 antibody) at dilution of 1:50 (under 10x lens)



Immunohistochemical of paraffin-embedded human heart using Catalog No:116523(UBE2E3 antibody) at dilution of 1:50 (under 40x lens)