

# TTF2 antibody

Catalog Number: 116477

## Product name

TTF2 antibody

IP: 1:200-1:2000

IHC: 1:20-1:200

## Specificity

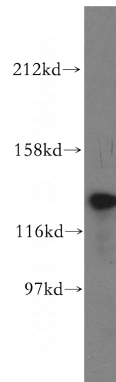
Human, Mouse, Rat; other species not tested.

IF: 1:20-1:200

## Antibody description

TTF2 Rabbit Polyclonal antibody. Positive IF detected in Hela cells. Positive IHC detected in human ovary tumor tissue. Positive WB detected in A2780 cells. Positive IP detected in A2780 cells. Observed molecular weight by Western-blot: 130 kDa

## Validations



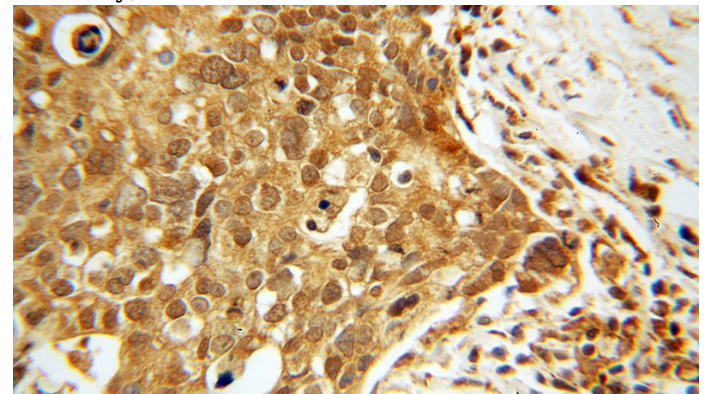
## Preparation

This antibody was obtained by immunization of TTF2 recombinant protein (Accession Number: BC030058). Purification method: Antigen affinity purified.

A2780 cells were subjected to SDS PAGE followed by western blot with Catalog No:116477(TTF2 antibody) at dilution of 1:500

## Formulation

PBS with 0.02% sodium azide and 50% glycerol pH 7.3.



## Storage

Store at -20°C. DO NOT ALIQUOT

## Clonality

Polyclonal

## Ig Type

Rabbit IgG

## Applications

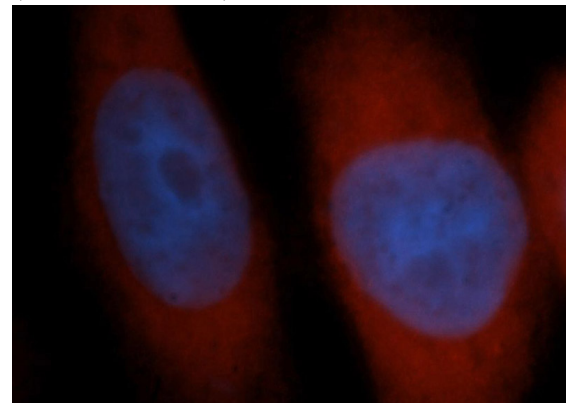
ELISA, WB, IHC, IF, IP

## Dilutions

Recommended Dilution:

WB: 1:500-1:5000

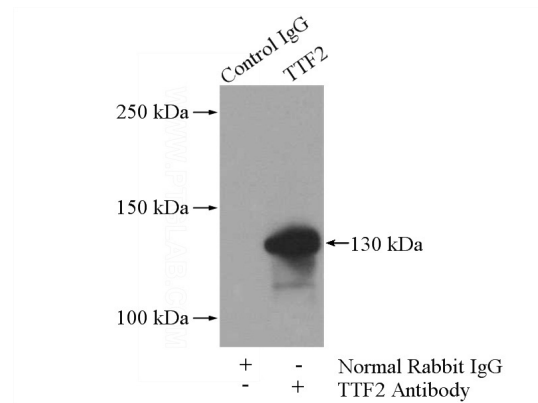
Immunohistochemical of paraffin-embedded human ovary tumor using Catalog No:116477(TTF2 antibody) at dilution of 1:100 (under 40x lens)



# TTF2 antibody

Catalog Number: 116477

Immunofluorescent analysis of HeLa cells, using TTF2 antibody Catalog No:116477 at 1:50 dilution and Rhodamine-labeled goat anti-rabbit IgG (red). Blue pseudocolor = DAPI (fluorescent DNA dye).



IP Result of anti-TTF2 (IP:Catalog No:116477, 4ug; Detection:Catalog No:116477 1:500) with A2780 cells lysate 840ug.