

U2AF35 antibody

Catalog Number: 116462

Product name

U2AF35 antibody

Specificity

human, mouse, rat; other species not tested.

Antibody description

U2AF35 Rabbit Polyclonal antibody. Positive WB detected in COLO 320 cells, HeLa cells. Positive IHC detected in human prostate cancer. Observed molecular weight by Western-blot: 35kd

Preparation

This antibody was obtained by immunization of U2AF35 recombinant protein (Accession Number: NM_006758). Purification method: Antigen affinity purified.

Formulation

PBS with 0.1% sodium azide and 50% glycerol pH 7.3.

Storage

Store at -20°C. DO NOT ALIQUOT

Clonality

Polyclonal

Ig Type

Rabbit IgG

Applications

ELISA, WB, IHC

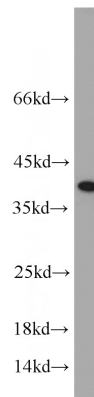
Dilutions

Recommended Dilution:

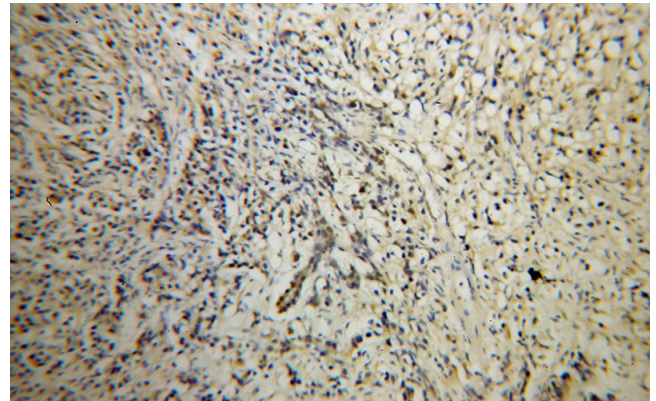
WB: 1:500-1:5000

IHC: 1:20-1:200

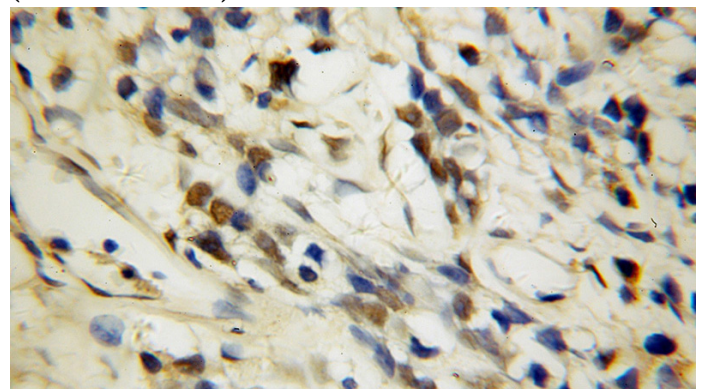
Validations



COLO 320 cells were subjected to SDS PAGE followed by western blot with Catalog No:116462(U2AF35 antibody) at dilution of 1:1000



Immunohistochemical of paraffin-embedded human prostate cancer using Catalog No:116462(U2AF35 antibody) at dilution of 1:100 (under 10x lens)



Immunohistochemical of paraffin-embedded human prostate cancer using Catalog No:116462(U2AF35 antibody) at dilution of 1:100 (under 40x lens)