

TXNDC16 antibody



Catalog Number: 116448

Product name

TXNDC16 antibody

Immunogen

[Human TXNDC16 Recombinant protein \(His tag\)](#)

Specificity

Human; other species not tested.

Antibody description

TXNDC16 Rabbit Polyclonal antibody. Positive IF detected in HeLa cells. Positive IHC detected in human kidney tissue, human cervical cancer tissue. Positive WB detected in HEK-293 cells, COLO 320 cells, HeLa cells, HepG2 cells, SMMC-7721 cells. Observed molecular weight by Western-blot: 100-105 kDa

Preparation

This antibody was obtained by immunization of TXNDC16 recombinant protein (Accession Number: NM_020784). Purification method: Antigen affinity purified.

Formulation

PBS with 0.1% sodium azide and 50% glycerol pH 7.3.

Storage

Store at -20°C. DO NOT ALIQUOT

Clonality

Polyclonal

Ig Type

Rabbit IgG

Applications

ELISA, IHC, WB, IF

Dilutions

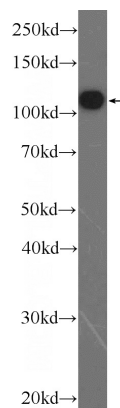
Recommended Dilution:

WB: 1:200-1:2000

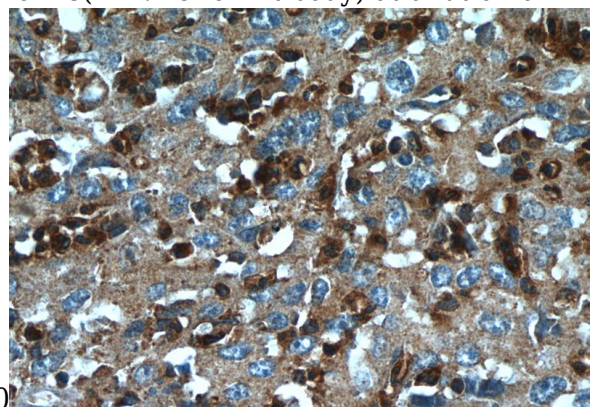
IHC: 1:20-1:200

IF: 1:20-1:200

Validations



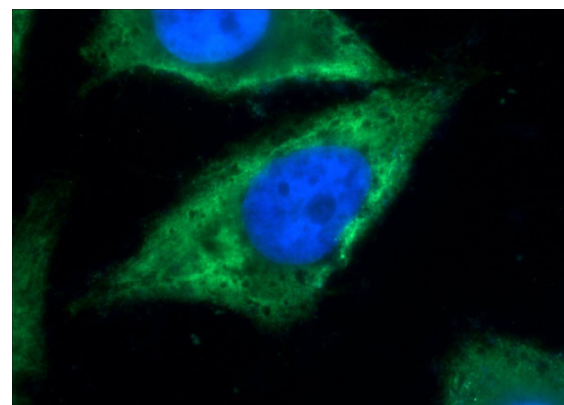
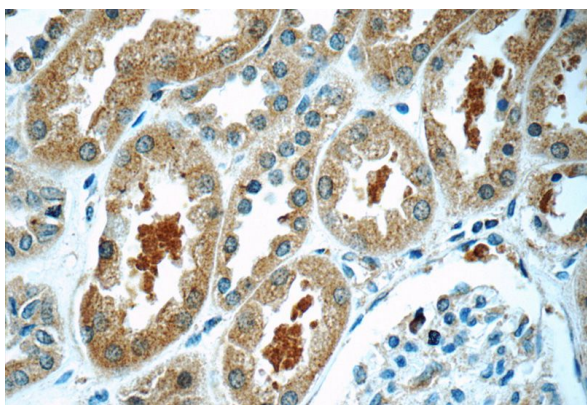
HEK-293 cells were subjected to SDS PAGE followed by western blot with Catalog No:116448(TXNDC16 Antibody) at dilution of



Immunohistochemistry of paraffin-embedded human cervical cancer tissue slide using Catalog No:116448(TXNDC16 Antibody) at dilution of 1:50 (under 40x lens)

TXNDC16 antibody

Catalog Number: 116448



Immunohistochemistry of paraffin-embedded human kidney tissue slide using Catalog No:116448(TXNDC16 Antibody) at dilution of 1:50 (under 40x lens)

Immunofluorescent analysis of HeLa cells using Catalog No:116448(TXNDC16 Antibody) at dilution of 1:50 and Alexa Fluor 488-conjugated AffiniPure Goat Anti-Rabbit IgG(H+L)