

# TSC22D2 antibody



Catalog Number: 116424

## Product name

TSC22D2 antibody

WB: 1:200-1:2000

IP: 1:200-1:1000

## Specificity

Human; other species not tested.

IHC: 1:20-1:200

IF: 1:20-1:200

## Antibody description

TSC22D2 Rabbit Polyclonal antibody. Positive IHC detected in human kidney tissue, human colon tissue. Positive IF detected in HepG2 cells. Positive IP detected in HepG2 cells. Positive WB detected in HeLa cells, HepG2 cells, MDA-MB-453s cells. Observed molecular weight by Western-blot: 100-110 kDa

## Preparation

This antibody was obtained by immunization of TSC22D2 recombinant protein (Accession Number: NM\_014779). Purification method: Antigen affinity purified.

## Formulation

PBS with 0.1% sodium azide and 50% glycerol pH 7.3.

## Storage

Store at -20°C. DO NOT ALIQUOT

## Clonality

Polyclonal

## Ig Type

Rabbit IgG

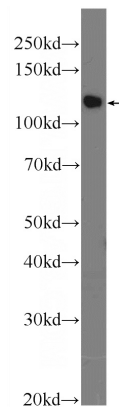
## Applications

ELISA, WB, IHC, IF, IP

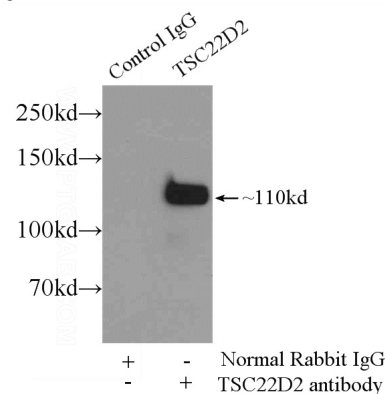
## Dilutions

Recommended Dilution:

## Validations



HeLa cells were subjected to SDS PAGE followed by western blot with Catalog No:116424(TSC22D2 Antibody) at dilution of 1:600

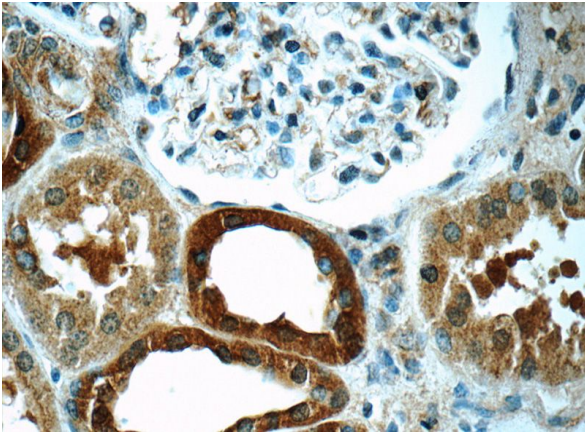


IP Result of anti-TSC22D2 (IP:Catalog No:116424, 5ug; Detection:Catalog No:116424 1:300) with HepG2 cells lysate 2500ug.

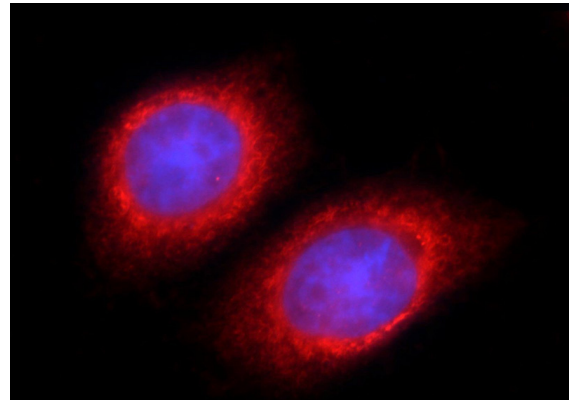
# TSC22D2 antibody

Catalog Number: 116424

---



(under 40x lens)



Immunohistochemistry of paraffin-embedded human kidney tissue slide using Catalog No:116424(TSC22D2 Antibody) at dilution of 1:50

Immunofluorescent analysis of HepG2 cells using Catalog No:116424(TSC22D2 Antibody) at dilution of 1:50 and Rhodamine-Goat anti-Rabbit IgG