

# TRUB1 antibody

Catalog Number: 116420

## Product name

TRUB1 antibody

IP: 1:200-1:1000

IHC: 1:20-1:200

## Specificity

Human, Mouse; other species not tested.

## Antibody description

TRUB1 Rabbit Polyclonal antibody. Positive IHC detected in human kidney tissue. Positive IP detected in mouse liver tissue. Positive WB detected in mouse liver tissue. Observed molecular weight by Western-blot: 37 kDa

## Preparation

This antibody was obtained by immunization of TRUB1 recombinant protein (Accession Number: NM\_139169). Purification method: Antigen affinity purified.

## Formulation

PBS with 0.02% sodium azide and 50% glycerol pH 7.3.

## Storage

Store at -20°C. DO NOT ALIQUOT

## Clonality

Polyclonal

## Ig Type

Rabbit IgG

## Applications

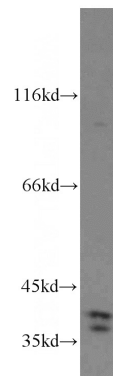
ELISA, WB, IHC, IP

## Dilutions

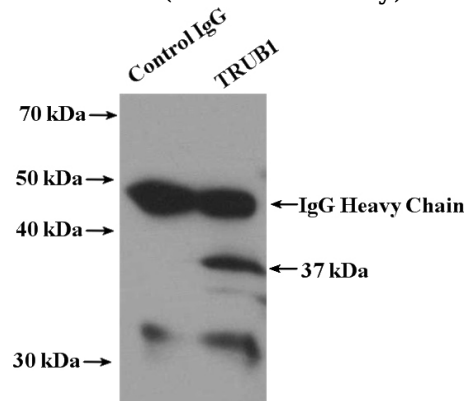
Recommended Dilution:

WB: 1:200-1:1000

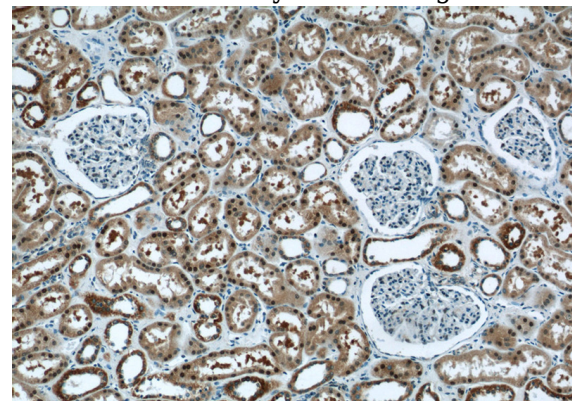
## Validations



mouse liver tissue were subjected to SDS PAGE followed by western blot with Catalog No:116420(TRUB1 antibody) at dilution of 1:300



IP Result of anti-TRUB1 (IP:Catalog No:116420, 4ug; Detection:Catalog No:116420 1:300) with mouse liver tissue lysate 6400ug.



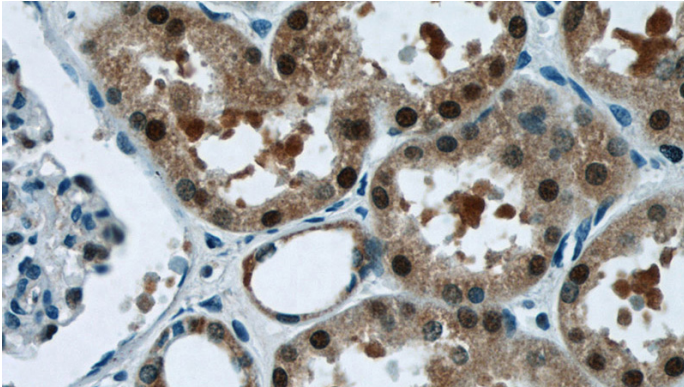
Immunohistochemistry of paraffin-embedded human kidney tissue slide using Catalog

# TRUB1 antibody

Catalog Number: 116420

---

No:116420(TRUB1 Antibody) at dilution of 1:50  
(under 10x lens)



Immunohistochemistry of paraffin-embedded  
human kidney tissue slide using Catalog  
No:116420(TRUB1 Antibody) at dilution of 1:50  
(under 40x lens)