

# TRPC1 antibody

Catalog Number: 116405

## Product name

TRPC1 antibody

## Specificity

Human, Mouse, Rat; other species not tested.

## Antibody description

TRPC1 Rabbit Polyclonal antibody. Positive IF detected in PC-12 cells. Positive FC detected in PC-3 cells. Positive WB detected in PC-3 cells, human brain tissue, human testis tissue, mouse liver tissue, SH-SY5Y cells. Observed molecular weight by Western-blot: 90 kDa, 130 kDa

## Preparation

This antibody was obtained by immunization of Peptide (Accession Number: NM\_003304). Purification method: Antigen affinity purified.

## Formulation

PBS with 0.02% sodium azide and 50% glycerol pH 7.3.

## Storage

Store at -20°C. DO NOT ALIQUOT

## Clonality

Polyclonal

## Ig Type

Rabbit IgG

## Applications

ELISA, WB, IF, FC

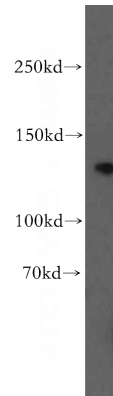
## Dilutions

Recommended Dilution:

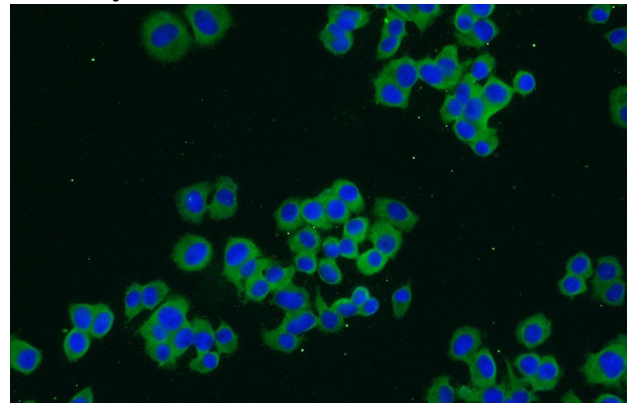
WB: 1:500-1:5000

IF: 1:10-1:100

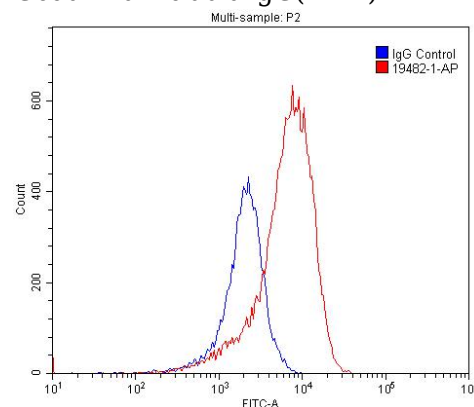
## Validations



PC-3 cells were subjected to SDS PAGE followed by western blot with Catalog No:116405(TRPC1 antibody) at dilution of 1:500



Immunofluorescent analysis of PC-12 cells using Catalog No:116405(TRPC1 Antibody) at dilution of 1:25 and Alexa Fluor 488-conjugated AffiniPure Goat Anti-Rabbit IgG(H+L)



1X10<sup>6</sup> PC-3 cells were stained with 0.2ug TRPC1 antibody (Catalog No:116405, red) and control

# TRPC1 antibody



Catalog Number: 116405

---

antibody (blue). Fixed with 4% PFA blocked with 3% BSA (30 min). Alexa Fluor 488-conjugated

AffiniPure Goat Anti-Rabbit IgG(H+L) with dilution 1:1500.