

TTF1; NKX2-1 antibody



Catalog Number: 116389

Product name

TTF1; NKX2-1 antibody

Specificity

Human; other species not tested.

Antibody description

TTF1; NKX2-1 Rabbit Polyclonal antibody. Positive WB detected in HeLa cells, A549 cells. Positive IHC detected in human lung cancer tissue. Observed molecular weight by Western-blot: 41-45 kDa

Preparation

This antibody was obtained by immunization of Peptide (Accession Number: NM_003317). Purification method: Antigen affinity purified.

Formulation

PBS with 0.1% sodium azide and 50% glycerol pH 7.3.

Storage

Store at -20°C. DO NOT ALIQUOT

Clonality

Polyclonal

Ig Type

Rabbit IgG

Applications

ELISA, WB, IHC

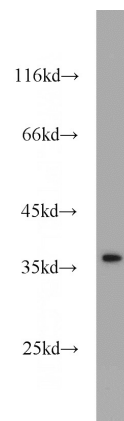
Dilutions

Recommended Dilution:

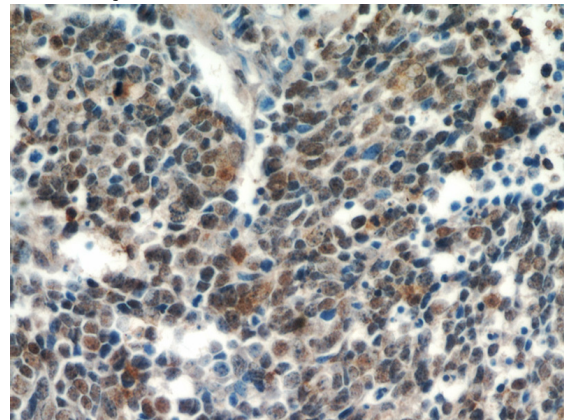
WB: 1:500-1:5000

IHC: 1:20-1:200

Validations



HeLa cells were subjected to SDS PAGE followed by western blot with Catalog No:116389(NKX2-1 antibody) at dilution of 1:1000



Immunohistochemical of paraffin-embedded human lung cancer using Catalog No:116389(NKX2-1 antibody) at dilution of 1:50 (under 40x lens)