

TRAPPC2L antibody



Catalog Number: 116343

Product name

TRAPPC2L antibody

IHC: 1:20-1:200

IF: 1:20-1:200

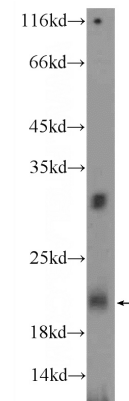
Specificity

Human, Mouse; other species not tested.

Validations

Antibody description

TRAPPC2L Rabbit Polyclonal antibody. Positive IHC detected in human kidney tissue. Positive IF detected in HepG2 cells. Positive WB detected in mouse bladder tissue. Observed molecular weight by Western-blot: 20 kDa



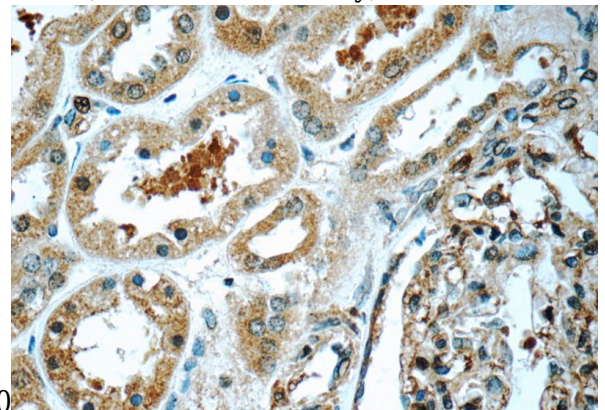
Preparation

This antibody was obtained by immunization of TRAPPC2L recombinant protein (Accession Number: NM_016209). Purification method: Antigen affinity purified.

mouse bladder tissue were subjected to SDS PAGE followed by western blot with Catalog No:116343(TRAPPC2L Antibody) at dilution of

Formulation

PBS with 0.1% sodium azide and 50% glycerol pH 7.3.



Storage

Store at -20°C. DO NOT ALIQUOT

Clonality

Polyclonal

Ig Type

Rabbit IgG

Applications

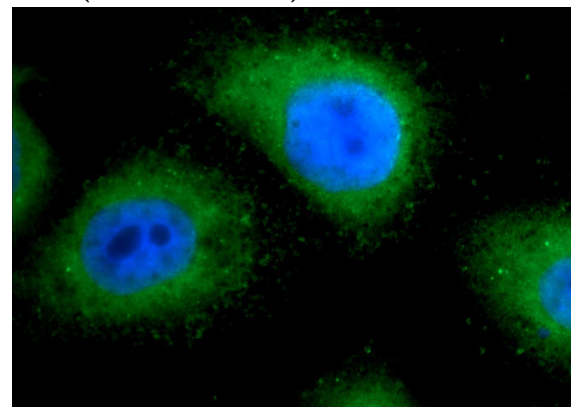
ELISA, WB, IHC, IF

Dilutions

Recommended Dilution:

WB: 1:200-1:1000

1:300. Immunohistochemistry of paraffin-embedded human kidney tissue slide using Catalog No:116343(TRAPPC2L Antibody) at dilution of 1:50 (under 40x lens)



TRAPPC2L antibody



Catalog Number: 116343

Immunofluorescent analysis of HepG2 cells using
Catalog No:116343(TRAPPC2L Antibody) at

dilution of 1:50 and Alexa Fluor 488-conjugated
AffiniPure Goat Anti-Rabbit IgG(H+L)