

# TRAPB/SSR2 antibody



Catalog Number: 116340

## Product name

TRAPB/SSR2 antibody

WB: 1:500-1:5000

IHC: 1:20-1:200

## Specificity

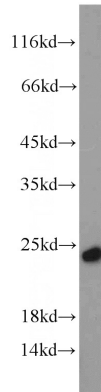
Human, Mouse, Rat; other species not tested.

IF: 1:10-1:100

## Antibody description

TRAPB/SSR2 Rabbit Polyclonal antibody. Positive WB detected in HepG2 cells, L02 cells, mouse liver tissue. Positive FC detected in MCF-7 cells. Positive IHC detected in human breast cancer tissue, human pancreas tissue. Positive IF detected in HepG2 cells. Observed molecular weight by Western-blot: 22-25kd

## Validations



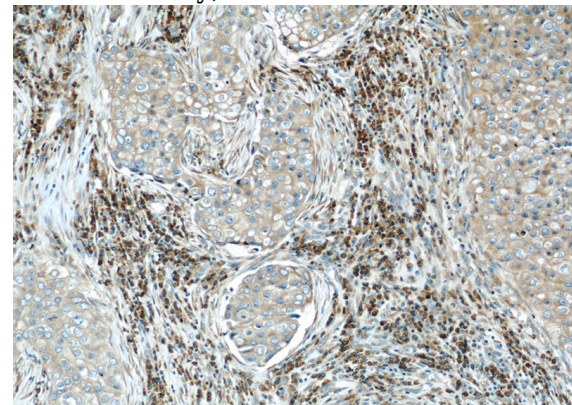
## Preparation

This antibody was obtained by immunization of TRAPB/SSR2 recombinant protein (Accession Number: NM\_003145). Purification method: Antigen affinity purified.

HepG2 cells were subjected to SDS PAGE followed by western blot with Catalog No:116340(TRAPB, SSR2 antibody) at dilution of 1:1000

## Formulation

PBS with 0.1% sodium azide and 50% glycerol pH 7.3.



## Storage

Store at -20°C. DO NOT ALIQUOT

## Clonality

Polyclonal

Immunohistochemical of paraffin-embedded human breast cancer using Catalog No:116340(TRAPB, SSR2 antibody) at dilution of 1:50 (under 10x lens)

## Ig Type

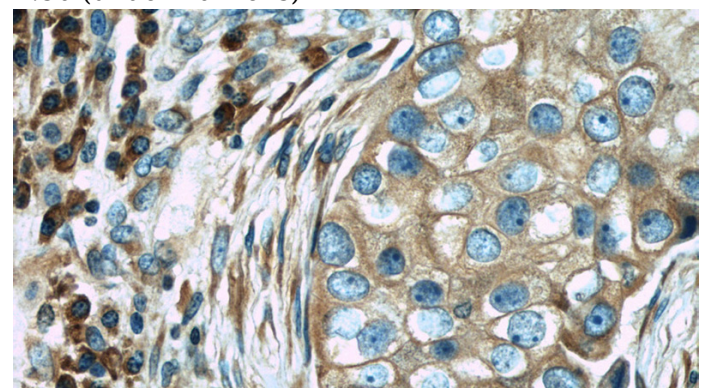
Rabbit IgG

## Applications

ELISA, WB, IHC, FC, IF

## Dilutions

Recommended Dilution:

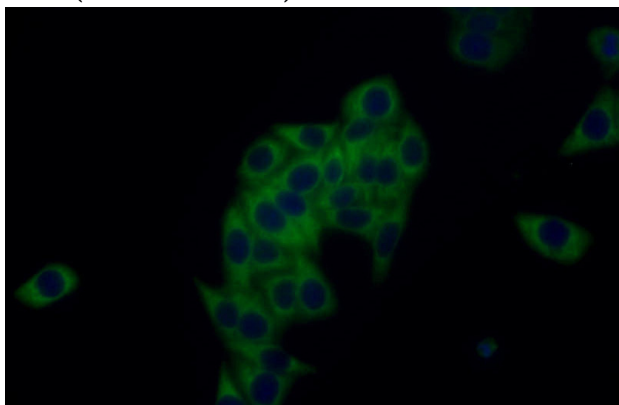


# TRAPB/SSR2 antibody



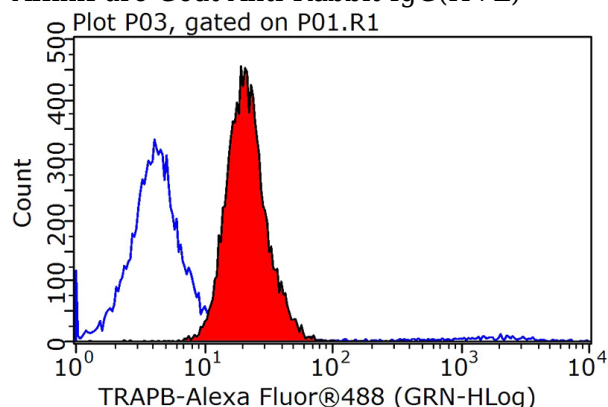
Catalog Number: 116340

Immunohistochemical of paraffin-embedded human breast cancer using Catalog No:116340(TRAPB, SSR2 antibody) at dilution of 1:50 (under 40x lens)



Immunofluorescent analysis of HepG2 cells using Catalog No:116340(TRAPB, SSR2 Antibody) at dilution of 1:25 and Alexa Fluor 488-conjugated

AffiniPure Goat Anti-Rabbit IgG(H+L)



1X10<sup>6</sup> MCF-7 cells were stained with 0.2ug TRAPB, SSR2 antibody (Catalog No:116340, red) and control antibody (blue). Fixed with 90% MeOH blocked with 3% BSA (30 min). Alexa Fluor 488-conjugated AffiniPure Goat Anti-Rabbit IgG(H+L) with dilution 1:1000.