

TRAPA/SSR1 antibody



Catalog Number: 116339

Product name

TRAPA/SSR1 antibody

Specificity

Human; other species not tested.

Antibody description

TRAPA/SSR1 Rabbit Polyclonal antibody. Positive WB detected in human liver tissue. Positive IHC detected in human ovary tumor tissue. Observed molecular weight by Western-blot: 34kd

Preparation

This antibody was obtained by immunization of TRAPA/SSR1 recombinant protein (Accession Number: NM_003144). Purification method: Antigen affinity purified.

Formulation

PBS with 0.1% sodium azide and 50% glycerol pH 7.3.

Storage

Store at -20°C. DO NOT ALIQUOT

Clonality

Polyclonal

Ig Type

Rabbit IgG

Applications

ELISA, WB, IHC

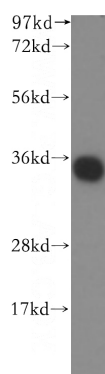
Dilutions

Recommended Dilution:

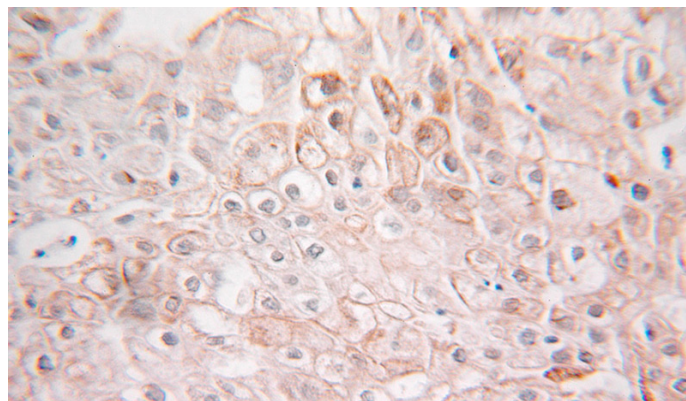
WB: 1:200-1:1000

IHC: 1:20-1:200

Validations



human liver tissue were subjected to SDS PAGE followed by western blot with Catalog No:116339(TRAPA, SSR1 antibody) at dilution of 1:250



Immunohistochemical of paraffin-embedded human ovary tumor using Catalog No:116339(TRAPA, SSR1 antibody) at dilution of 1:100 (under 25x lens)