

TMX2 antibody

Catalog Number: 116282

Product name

TMX2 antibody

WB: 1:1000-1:10000

IHC: 1:20-1:200

Specificity

human, mouse, rat; other species not tested.

Antibody description

TMX2 Rabbit Polyclonal antibody. Positive WB detected in human brain tissue, HeLa cells, HepG2 cells, human liver tissue, human placenta tissue, mouse lung tissue, mouse pancreas tissue, human testis tissue. Positive IHC detected in human kidney. Observed molecular weight by Western-blot: 30kd,34kd

Preparation

This antibody was obtained by immunization of TMX2 recombinant protein (Accession Number: NM_015959). Purification method: Antigen affinity purified.

Formulation

PBS with 0.02% sodium azide and 50% glycerol pH 7.3.

Storage

Store at -20°C. DO NOT ALIQUOT

Clonality

Polyclonal

Ig Type

Rabbit IgG

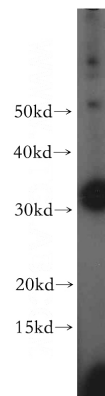
Applications

ELISA, WB, IHC

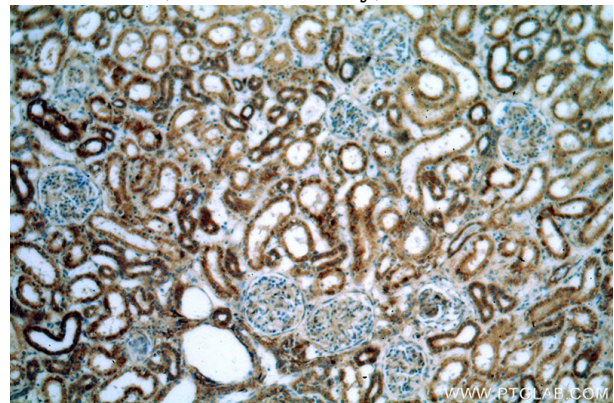
Dilutions

Recommended Dilution:

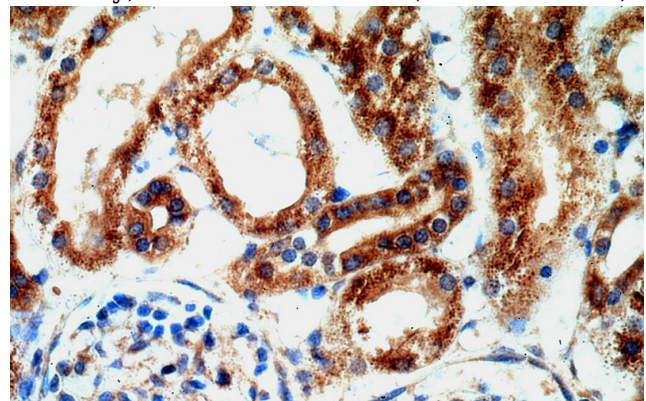
Validations



human brain tissue were subjected to SDS PAGE followed by western blot with Catalog No:116282(TMx2 antibody) at dilution of 1:500



Immunohistochemical of paraffin-embedded human kidney using Catalog No:116282(TMx2 antibody) at dilution of 1:200 (under 10x lens)



Immunohistochemical of paraffin-embedded human kidney using Catalog No:116282(TMx2

TMX2 antibody



Catalog Number: 116282

antibody) at dilution of 1:200 (under 40x lens)