

TPM2 antibody

Catalog Number: 116267

Product name

TPM2 antibody

Recommended Dilution:

WB: 1:200-1:2000

Specificity

Human, Mouse, Rat; other species not tested.

IP: 1:200-1:2000

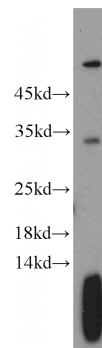
IHC: 1:20-1:200

Antibody description

TPM2 Rabbit Polyclonal antibody. Positive WB detected in mouse skeletal muscle tissue. Positive IP detected in mouse skeletal muscle tissue. Positive IF detected in HepG2 cells. Positive IHC detected in human breast cancer tissue, human colon tissue, human heart tissue, human skeletal muscle tissue. Observed molecular weight by Western-blot: 29-33 kDa

IF: 1:10-1:100

Validations



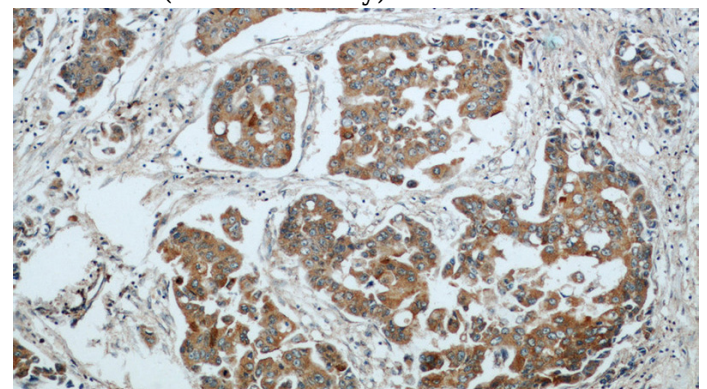
Preparation

This antibody was obtained by immunization of TPM2 recombinant protein (Accession Number: NM_213674). Purification method: Antigen affinity purified.

mouse skeletal muscle tissue were subjected to SDS PAGE followed by western blot with Catalog No:116267(TPM2 antibody) at dilution of 1:600

Formulation

PBS with 0.1% sodium azide and 50% glycerol pH 7.3.



Storage

Store at -20°C. DO NOT ALIQUOT

Clonality

Polyclonal

Ig Type

Rabbit IgG

Immunohistochemical of paraffin-embedded human breast cancer using Catalog No:116267(TPM2 antibody) at dilution of 1:50 (under 10x lens)

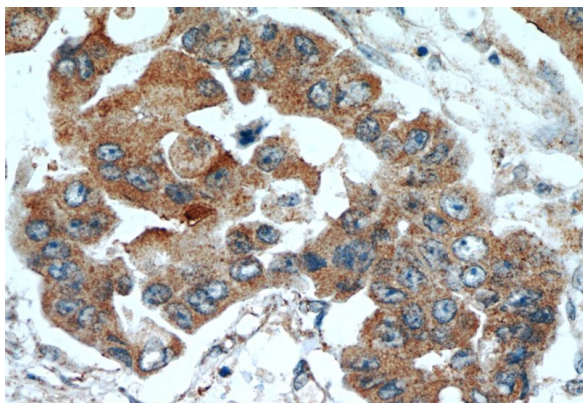
Applications

ELISA, WB, IHC, IF, IP

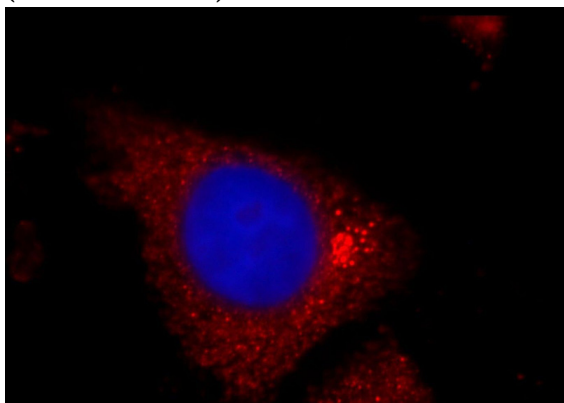
Dilutions

TPM2 antibody

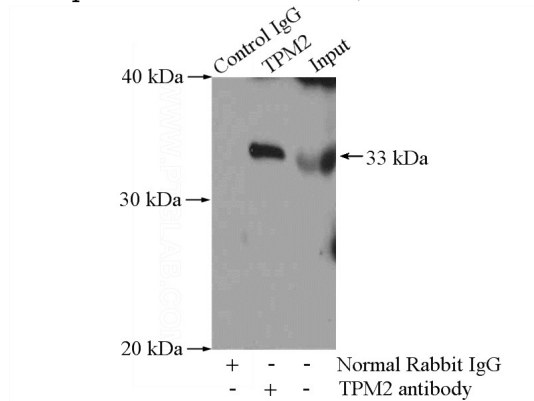
Catalog Number: 116267



Immunohistochemical of paraffin-embedded human breast cancer using Catalog No:116267(TPM2 antibody) at dilution of 1:50 (under 40x lens)



Immunofluorescent analysis of HepG2 cells, using TPM2 antibody Catalog No:116267 at 1:25 dilution and Rhodamine-labeled goat anti-rabbit IgG (red).Blue pseudocolor = DAPI (fluorescent



DNA dye).

IP Result of anti-TPM2 (IP:Catalog No:116267, 4ug; Detection:Catalog No:116267 1:500) with mouse skeletal muscle tissue lysate 3600ug.