

TPD52L2 antibody



Catalog Number: 116262

Product name

TPD52L2 antibody

Specificity

Human, Mouse, Rat; other species not tested.

Antibody description

TPD52L2 Rabbit Polyclonal antibody. Positive IP detected in HEK-293 cells. Positive WB detected in HEK-293 cells, HeLa cells, human brain tissue, human kidney tissue, Jurkat cells, K-562 cells, MCF7 cells, mouse brain tissue, rat brain tissue. Positive IF detected in HepG2 cells. Positive IHC detected in human breast cancer tissue, human testis tissue. Observed molecular weight by Western-blot: 25-30kd

Preparation

This antibody was obtained by immunization of TPD52L2 recombinant protein (Accession Number: NM_003288). Purification method: Antigen affinity purified.

Formulation

PBS with 0.1% sodium azide and 50% glycerol pH 7.3.

Storage

Store at -20°C. DO NOT ALIQUOT

Clonality

Polyclonal

Ig Type

Rabbit IgG

Applications

ELISA, WB, IHC, IF, IP

Dilutions

Recommended Dilution:

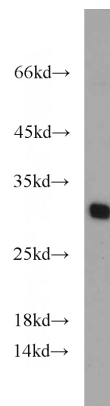
WB: 1:200-1:2000

IP: 1:200-1:2000

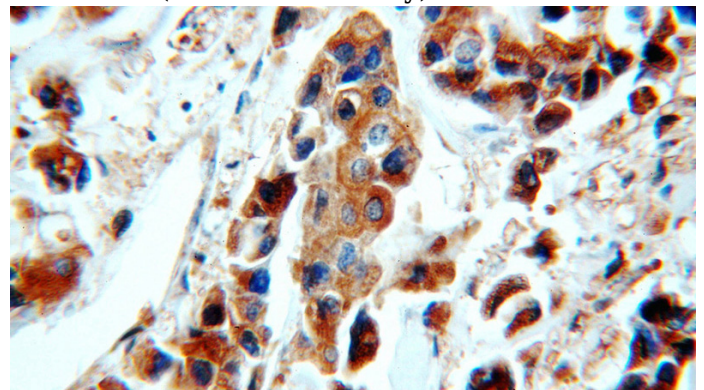
IHC: 1:20-1:200

IF: 1:10-1:100

Validations



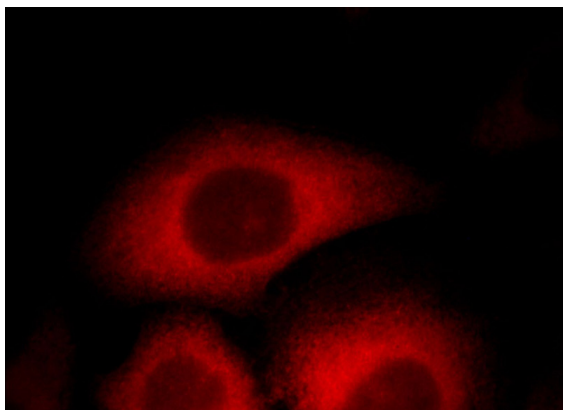
HEK-293 cells were subjected to SDS PAGE followed by western blot with Catalog No:116262 (TPD52L2 antibody) at dilution of 1:800



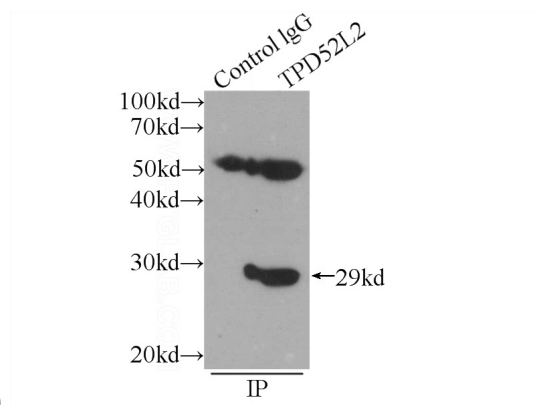
Immunohistochemical of paraffin-embedded human breast cancer using Catalog No:116262 (TPD52L2 antibody) at dilution of 1:50 (under 40x lens)

TPD52L2 antibody

Catalog Number: 116262



Immunofluorescent analysis of HepG2 cells, using TPD52L2 antibody Catalog No:116262 at 1:25 dilution and Rhodamine-labeled goat anti-rabbit



IgG (red).

IP Result of anti-TPD52L2 (IP:Catalog No:116262, 3ug; Detection:Catalog No:116262 1:800) with HEK-293 cells lysate 2400ug.